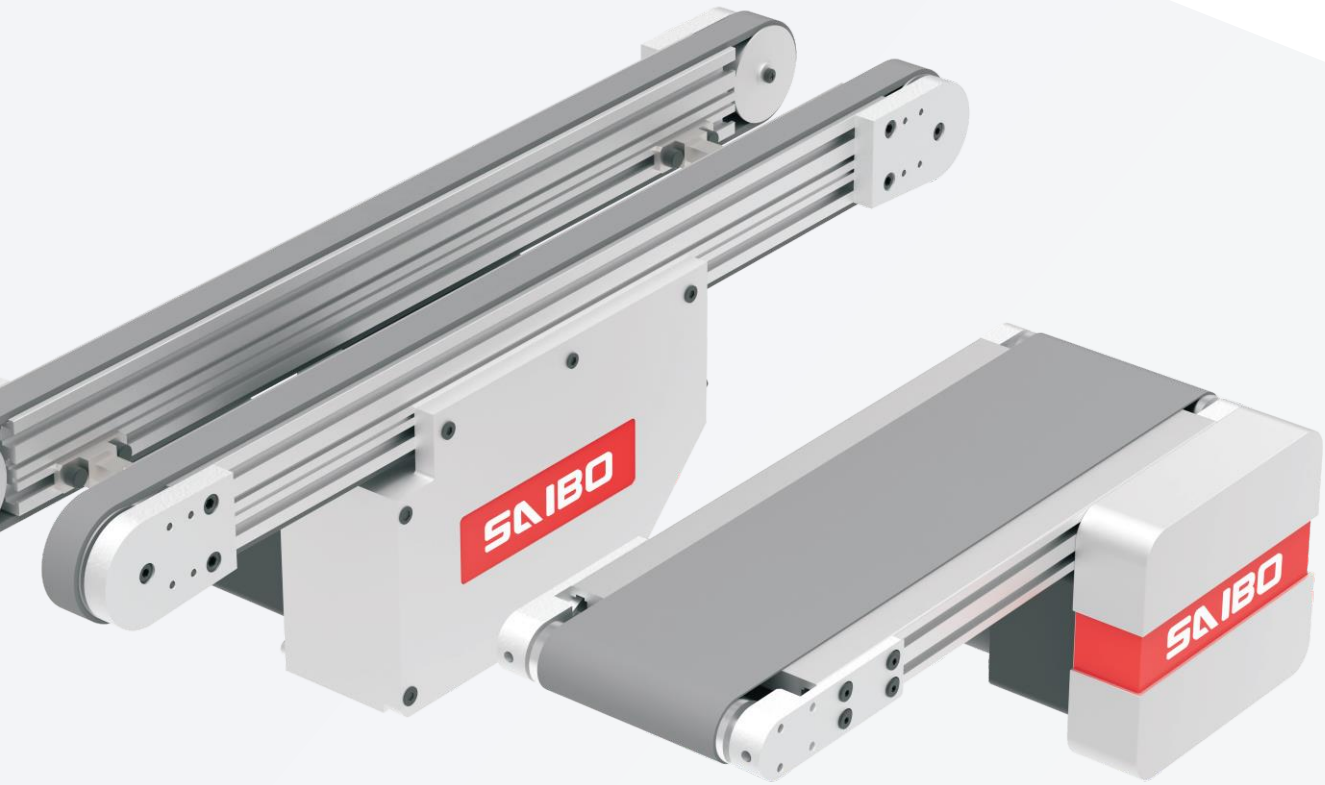


**SAIBO**  
Innovation in Motion



# FLAT BELT CONVEYOR



SAIBO is one of world recognized manufacturers of precision power transmission components. SAIBO group has two divisions, linear motion division and bearing division. Linear Product Division mainly produces curved rail and conveyor, telescopic rail and fork, linear guide, linear module, belt conveyor etc. Bearing Division mainly produces Thin-section bearing, High-speed angular contact ball bearing, linear bearing etc.

SAIBO products are widely used in 3C, factory automation, precision machine, green energy, rail transportation, medical and pharmacy etc. industries. SAIBO end users are located in more than 50 countries and regions around the world.

SAIBO has over 33,000 square meters producing facilities totally and 350 employees. SAIBO continues to develop innovative automation components and modulars to meet customers sustainable solutions.

SAIBO means aim for greatness, focus on details. We seek to work with you and promise the following:

- The right product from your application
- A quality product you can trust
- Engineering assistance that is proven and world renown

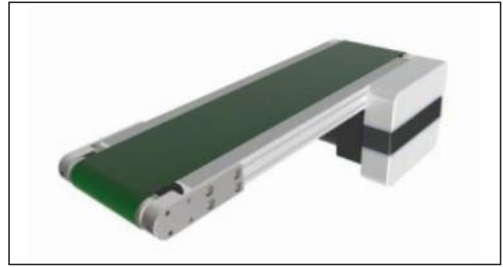
**SAIBO**

## Quick Product Selection

Part Number	Prevent Lateral Movement	Load Capacity (kg)	Convey Distance (mm)	Belt Width Options (mm)	Driving Wheel Diameter (mm)	Page	
FBE31	/	15	300-3000	50	30	1	
FBE32	Available	15	300-3000	100		2	
FBE33	/	15	390-3000	150		3	
FBE34	Available	15	390-3000	200		4	
FBC31	/	15	190-2000	250		5	
FBC32	Available	15	190-2000	50-300		6	
FBC33	/	15	355-2000	30-300		7	
FBC34	Available	15	355-2000	50-300		8	
FBC51	/	15	240-2000	40-300	50	9	
FBC52	Available	15	240-2000	50-300		10	
FBC53	/	15	385-2000	40-300		11	
FBC54	Available	15	385-2000	50-300		12	
FBF31	/	15	280-2000	60-300	30	13	
FBF32	Available	15	280-2000	70-300	30	14	
FBW71	/	10	415-2000	60,100,150	70	15	
FBS31	Available	15	220-600	50-300	30	16	
FBH61	/	100	600-5000	100-1200	60	17	
FTS22	Available	10	245-2000	10,20	19/20	18	
FTS24		10	330-2000	10,20	19/20	19	
FTD32		15	255-3000	10	80-300	30	20
FTD52		15	285-3000	20	80-300	50	21
FTD34		15	265-3000	10	80-300	30	22
FTD54		15	325-3000	20	80-300	50	23
FTW51		15	300-3000	20	150-300	50	24
FTH71		50	600-5000	50	150-600	70	25

## Flat Belt Conveyor (Economic Type) End Drive, 2-Groove Frame (Pulley Dia. 30mm)

**Features:** Streamlined structure, low cost.



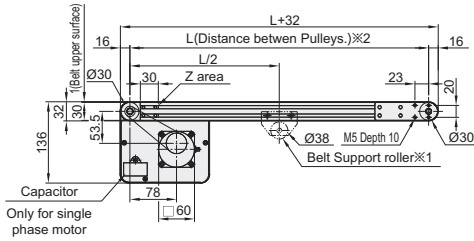
**Specification:**

**FBE31-50-1000-25-TA220-SCM-25-A-N**

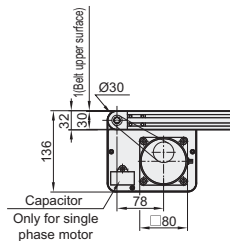
- ① ② ③ ④ ⑤ ⑥ ⑦ ⑧ ⑨

① Part Number	② Width B	③ Length L (5mm Increment)	Motor				⑧ Belt Specification	⑨ Motor manufacturer Selection
			④ Output(W)	⑤ Voltage(V)	⑥ Specification	⑦ Gearhead Reduction Ratio		
FBE31	50 100 150 200 250	300~3000	6	TA220	SCM	5 7.5 9 12.5 15 18 25 30 36 50 60 75 90 100 120 150 180 * 5-9 not applicable for 6W motor	A(General, Green) B(General, White) C(For sliding, Green) D(For sliding, White) E(Static conductive Black) F(Food grade, White) G(Oil resistant, Navy Blue) H(Non-Stick food grade, White)	Chinese brand  Panasonic Motor
			25	SA200	INV			

**Motor Power: 6W**

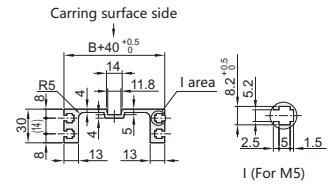


**Motor Power: 25W**

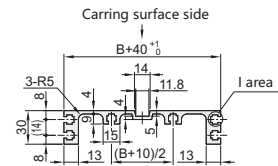


**Profile cross section**

For B=50

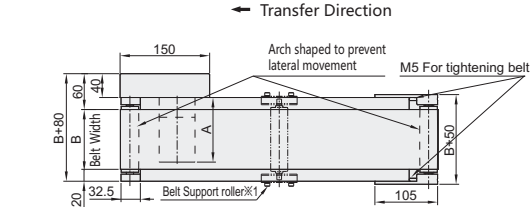


For B=100~250



① B=50, down facing slot is not provided.

② Compatible with GB/DIN/JIS Standard hex nut

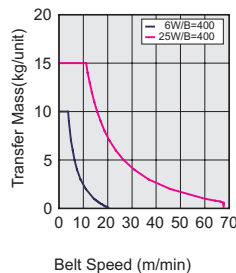


- ※1 Applied when L≥2005
- ※2 4 hex nuts installed in each slot when L≥400
- ① All above drawing is according to Belt specification A.
- ② Hex nuts can't move in Z area.

**Motor size A**

Output (W)	Motor		Reduction ratio	Motor length A
	Specification	Manufacturer		
6W	Constant speed motor	Chinese	5~18	117
		Panasonic	5~18	111
	Three phase motor	Chinese	20~180	127
		Panasonic	20~180	118
25W	Constant speed motor	Chinese	5~18	117
		Panasonic	5~18	128
	Three phase motor	Chinese	20~180	128.5
		Panasonic	20~180	138.5
Constant speed motor	Panasonic	5~18	128	115
	Panasonic	5~18	128.5	125

**Convey Capacity**



※ Reference value may vary with different belt

**Gearhead Reduction Ratio**

Gearhead Reduction Ratio	Belt Speed(m/min)	
	50Hz	60Hz
5	56.4	67.7
7.5	37.6	45.1
9	31.3	37.6
12.5	22.6	27.1
15	18.8	22.6
18	15.7	18.8
25	11.3	13.5
30	9.4	11.3
36	7.8	9.4
50	5.6	6.8
60	4.7	5.6
75	3.8	4.5
90	3.1	3.8
100	2.8	3.4
120	2.4	2.8
150	1.9	2.3
180	1.6	1.9

★ This table reference values are based on Panasonic motor(1400 rpm,60Hz)  
Chinese brand motor(1300 rpm, 60Hz)  
★ Reference values may vary with load condition.

# Flat Belt Conveyor (Economic Type)

Guided Belt to Prevent Lateral Movement.  
End Drive, 2-Groove Frame (Pulley Dia. 30mm)

**Features:** Streamlined structure, low cost. The guided belt maintains straight movement.



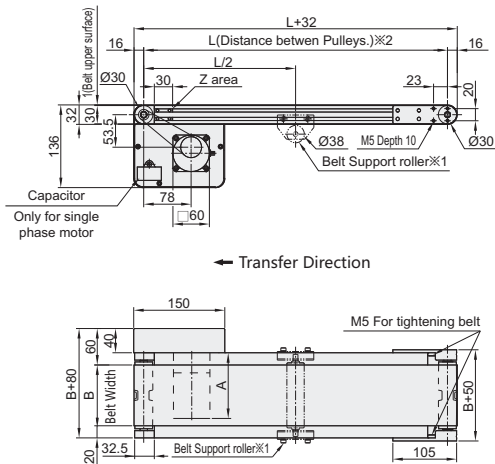
**Specification:**

**FBE32-50-1000-25-TA220-SCM-25-A-N**

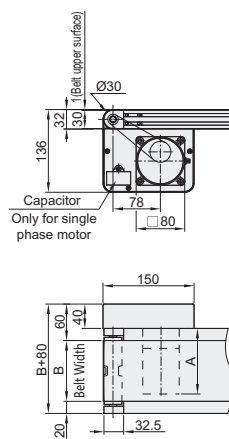
① ② ③ ④ ⑤ ⑥ ⑦ ⑧ ⑨

Type		③Length L (5mm Increment)	Motor				⑧Belt Specification	⑨ Motor manufacturer Selection
①Part Number	②Width B		④Output(W)	⑤Voltage(V)	⑥Specification	⑦Gearhead Reduction Ratio		
FBE32	50	300~3000	6	TA220 Single Phase	SCM Variable Speed Motor	5 7.5 9 12.5	A(General, Green) B(General, White) C:(For sliding, Green) D:(For sliding, White) E:(Static conductive Black) F:(Food grade, White) G:(Oil resistant, Navy Blue) H:(None-Stick food grade, White)	Chinese brand  Panasonic Motor
	100		25			SA200 Three Phase		
	150							
	200							
	250							

**Motor Power: 6W**

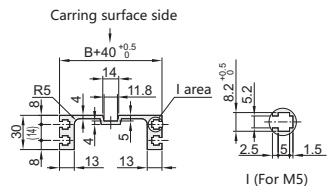


**Motor Power: 25W**

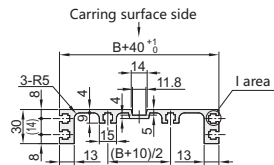


**Profile cross section**

For B=50



For B=100~250



① B=50, down facing slot is not provided.

② Compatible with GB/DIN/JIS Standard hex nut

※1 Applied when L≥2005

※2 4 hex nuts installed in each slot when L≥400

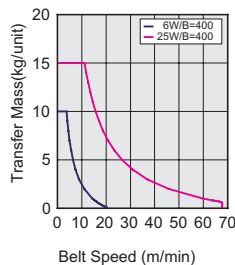
① All above drawing is according to Belt specification A.

② Hex nuts can't move in Z area.

**Motor size A**

Output (W)	Motor		Reduction ratio	Motor length A
	Specification	Manufacturer		
6W	Constant speed motor	Chinese	5~18	117
			20~180	127
		Panasonic	5~18	111
			20~180	118
25W	Three phase motor	Chinese	5~18	117
			20~180	128.5
	Constant speed motor	Chinese	5~18	128
			20~180	138.5
	Three phase motor	Panasonic		115
			5~180	125

**Convey Capacity**



※ Reference value may vary with different belt

**Gearhead Reduction Ratio**

Gearhead Reduction Ratio	Belt Speed(m/min)	
	50Hz	60Hz
5	56.4	67.7
7.5	37.6	45.1
9	31.3	37.6
12.5	22.6	27.1
15	18.8	22.6
18	15.7	18.8
25	11.3	13.5
30	9.4	11.3
36	7.8	9.4
50	5.6	6.8
60	4.7	5.6
75	3.8	4.5
90	3.1	3.8
100	2.8	3.4
120	2.4	2.8
150	1.9	2.3
180	1.6	1.9

※ This table reference values are based on

Panasonic motor(1400 rpm,60Hz)

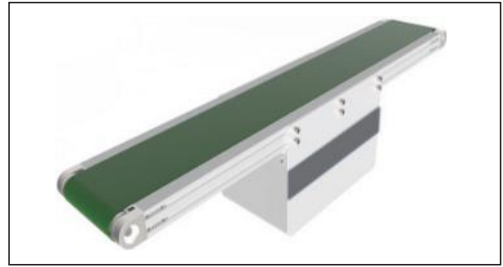
Chinese brand motor(1300 rpm, 60Hz)

※ Reference values may vary with load condition.

## Flat Belt Conveyor (Economic Type)

### Center Drive, 2-Groove Frame (Pulley Dia. 30mm)

**Features:** Streamlined structure, low cost. The center drive is suitable for "conveyor to conveyor"



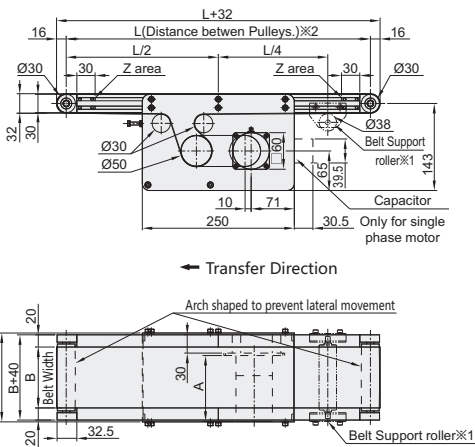
**Specification:**

**FBE33-50-1000-25-TA220-SCM-5-A-N**

- ① ② ③ ④ ⑤ ⑥ ⑦ ⑧ ⑨

Type		③ Length L (5mm Increment)	Motor				⑧ Belt Specification	⑨ Motor manufacturer Selection
① Part Number	② Width B		④ Output(W)	⑤ Voltage(V)	⑥ Specification	⑦ Gearhead Reduction Ratio		
FBE33	50	390~3000	6 25 40	TA220 Single Phase	SCM Variable Speed Motor	5 7.5 9 12.5	A(General, Green) B(General, White) C(For sliding, Green) D(For sliding, White) E(Static conductive Black) F(Food grade, White) G(Oil resistant, Navy Blue) H(Non-Stick food grade, White)	Chinese brand  Panasonic Motor
	100 150 200 250		25 40 60 90			SA200 Three Phase		

**Motor Power: 6W**

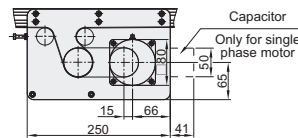


- ※1 Applied when L ≥ 2005
- ※2 4 hex nuts installed in each slot when L ≥ 490
- ① All above drawing is according to Belt specification A.
- ② Hex nuts can't move in Z area.

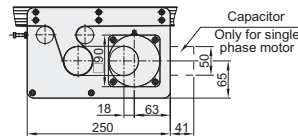
**Motor size A**

Output (W)	Motor		Reduction ratio	Motor length A
	Specification	Manufacturer		
6W	Constant speed motor	Chinese	5~18	117
		Panasonic	5~18	111
	Three phase motor	Chinese	20~180	118
		Panasonic	5~18	118
25W	Three phase motor	Chinese	20~180	128.5
		Panasonic	5~18	128
	Constant speed motor	Chinese	5~18	128
		Panasonic	5~18	138.5
40W	Three phase motor	Chinese	5~18	115
		Panasonic	5~180	125
	Constant speed motor	Chinese	5~18	147
		Panasonic	5~18	157
60W	Three phase motor	Chinese	20~180	175
		Panasonic	5~180	142
	Constant speed motor	Chinese	5~18	186
		Panasonic	5~180	210
90W	Three phase motor	Chinese	5~180	180
		Panasonic	5~180	210
	Constant speed motor	Chinese	5~180	195
		Panasonic	5~180	234.5

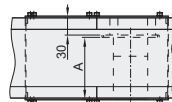
**Motor Power: 25W**



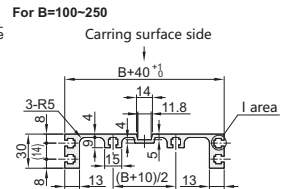
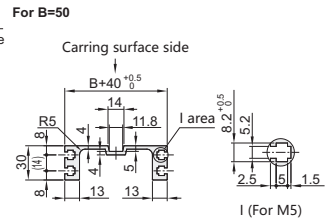
**Motor Power: 40W, 60W, 90W**



**Motor Power: 25W, 40W, 60W, 90W**



**Profile cross section**

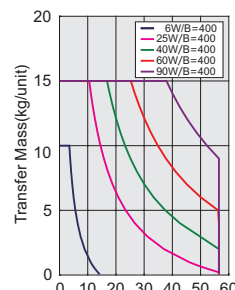


- ① B=50, down facing slot is not provided.
- ② Compatible with GB/DIN/JIS Standard hex nut

**Gearhead Reduction Ratio**

Gearhead Reduction Ratio	Belt Speed(m/min)	
	50Hz	60Hz
5	47.1	56.5
7.5	31.4	37.7
9	26.2	31.4
12.5	18.8	22.6
15	15.7	18.8
18	13.1	15.7
25	9.4	11.3
30	7.9	9.4
36	6.5	7.9
50	4.7	5.7
60	3.9	4.7
75	3.1	3.8
90	2.6	3.1
100	2.4	2.8
120	2.0	2.4
150	1.6	1.9
180	1.3	1.6

**Convey Capacity**



※ Reference value may vary with different belt

- \* This table reference values are based on Panasonic motor(1400 rpm,60Hz)
- Chinese brand motor(1300 rpm, 60Hz)
- \* Reference values may vary with load condition.



# Flat Belt Conveyor (Economic Type)

Guided Belt to Prevent Lateral Movement.  
Center Drive, 2-Groove Frame (Pulley Dia. 30mm)

**Features:** Streamlined structure, low cost. The center drive is suitable for "conveyor to conveyor"



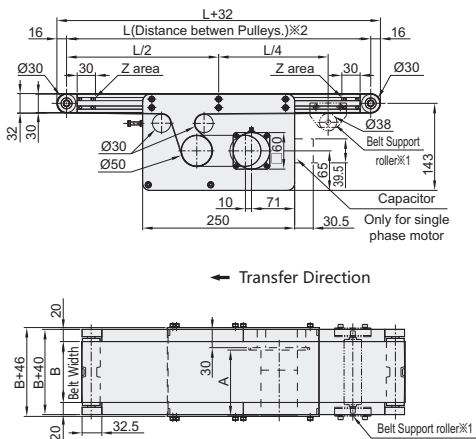
**Specification:**

**FBE34-50-3000-90-TA220-SCM-5-A-N**

① ② ③ ④ ⑤ ⑥ ⑦ ⑧ ⑨

Type		③Length L (5mm Increment)	Motor				⑧Belt Specification	⑨ Motor manufacturer Selection
①Part Number	②Width B		④Output(W)	⑤Voltage(V)	⑥Specification	⑦Gearhead Reduction Ratio		
FBE34	50	390~3000	6 25 40	TA220 Single Phase	SCM Variable Speed Motor	5 7.5 9 12.5	A(General, Green) B(General, White) C:(For sliding, Green) D:(For sliding, White) E:(Static conductive Black) F:(Food grade, White) G:(Oil resistant, Navy Blue) H:(None-Stick food grade, White)	Chinese brand  Panasonic Motor
	100		150			200		

**Motor Power: 6W**

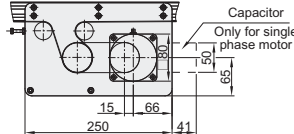


- ※1 Applied when L ≥ 2005
- ※2 4 hex nuts installed in each slot when L ≥ 490
- ① All above drawing is according to Belt specification A.
- ② Hex nuts can't move in Z area.

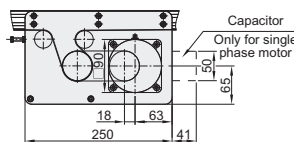
**Motor size A**

Output (W)	Motor		Reduction ratio	Motor length A
	Specification	Manufacturer		
6W	Constant speed motor	Chinese	5~18	117
		Panasonic	5~18	111
	Three phase motor	Chinese	20~180	127
		Panasonic	20~180	118
25W	Three phase motor	Chinese	20~180	128.5
		Panasonic	5~18	128
	Constant speed motor	Chinese	20~180	138.5
		Panasonic	5~18	115
40W	Three phase motor	Chinese	5~18	147
		Panasonic	5~18	157
	Constant speed motor	Chinese	20~180	175
		Panasonic	5~180	142
60W	Three phase motor	Chinese	5~180	168
		Panasonic	5~180	186
	Constant speed motor	Chinese	5~180	180
		Panasonic	5~180	210
90W	Three phase motor	Chinese	5~180	210
		Panasonic	5~180	195
	Constant speed motor	Chinese	5~180	234.5
		Panasonic	5~180	234.5

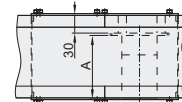
**Motor Power: 25W**



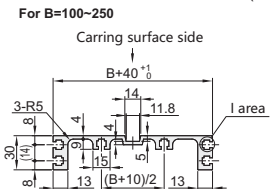
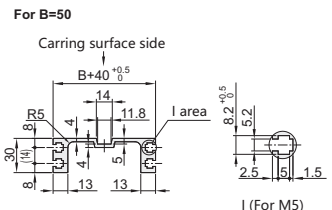
**Motor Power: 40W, 60W, 90W**



**Motor Power: 25W, 40W, 60W, 90W**



**Profile cross section**

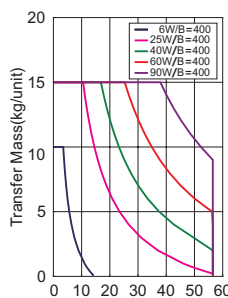


- ① B=50, down facing slot is not provided.
- ② Compatible with GB/DIN/JIS Standard hex nut

**Gearhead Reduction Ratio**

Gearhead Reduction Ratio	Belt Speed(m/min)	
	50Hz	60Hz
5	47.1	56.5
7.5	31.4	37.7
9	26.2	31.4
12.5	18.8	22.6
15	15.7	18.8
18	13.1	15.7
25	9.4	11.3
30	7.9	9.4
36	6.5	7.9
50	4.7	5.7
60	3.9	4.7
75	3.1	3.8
90	2.6	3.1
100	2.4	2.8
120	2.0	2.4
150	1.6	1.9
180	1.3	1.6

**Convey Capacity**

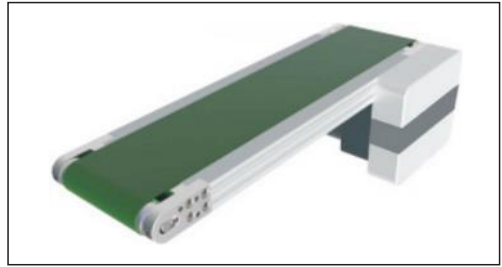


Belt Speed (m/min)  
※ Reference value may vary with different belt

※ This table reference values are based on Panasonic motor(1400 rpm,60Hz)  
Chinese brand motor(1300 rpm, 60Hz)  
※ Reference values may vary with load condition.

## Flat Belt Conveyor (Customized Width Type) End Drive, 2-Groove Frame (Pulley Dia. 30mm)

**Features:** Belt width could be customized in the range of 30~300mm with 10mm increment.



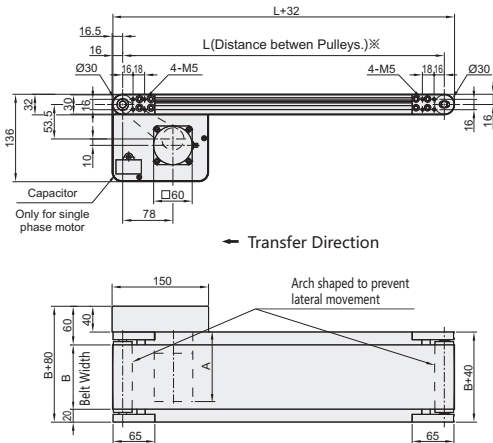
**Specification:**

**FBC31-30-2000-25-TA220-SCM-5-A-N**

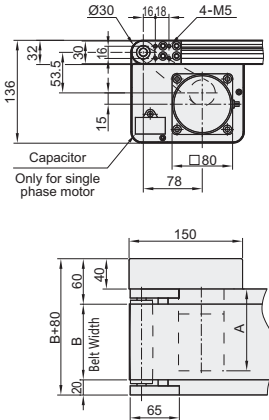
① ② ③ ④ ⑤ ⑥ ⑦ ⑧ ⑨

① Part Number	② Width B 10mm increments	③ Length L (5mm Increment)	Motor				⑧ Belt Specification	⑨ Motor manufacturer Selection
			④ Output(W)	⑤ Voltage(V)	⑥ Specification	⑦ Gearhead Reduction Ratio		
FBC31	30~300	190~2000	6 25	TA100 Single Phase TA220 Single Phase	SCM Variable Speed Motor	5 7.5 9 12.5 15 18 25 30 36 50 60 75 90 100 120 150 180 * 5-9 not applicable for 6W motor	A(General,Green) B(General,White) C(For sliding, Green) D(For sliding, White) E(Static conductive Black) F(Food grade, White) G(Oil resistant, Navy Blue) H(None-Stick food grade, White)	Chinese brand  Panasonic Motor
			25	SA200 Three Phase	INV Induction Motor + Inverter			

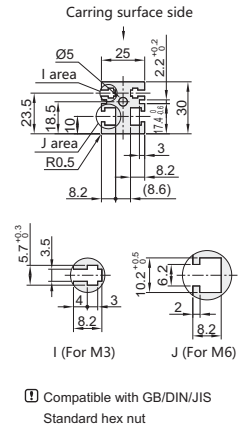
**Motor Power: 6W**



**Motor Power: 25W**



**Profile cross section**

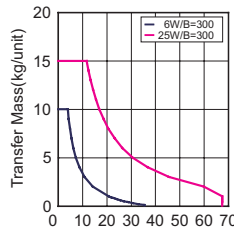


※ L ≥ 290, 3 nuts installed in each groove.  
① All above drawing is according to Belt specification A.

**Motor size A**

Output (W)	Motor		Reduction ratio	Motor length A
	Specification	Manufacturer		
6W	Constant speed motor	Chinese	5~18	117
			20~180	127
		Panasonic	5~18	111
			20~180	118
25W	Three phase motor	Chinese	5~18	117
			20~180	128.5
	Constant speed motor	Chinese	5~18	128
			20~180	138.5
	Three phase motor	Panasonic	5~18	115
			Constant speed motor	5~18

**Convey Capacity**



Belt Speed (m/min)  
※ Reference value may vary with different belt

**Gearhead Reduction Ratio**

Gearhead Reduction Ratio	Belt Speed(m/min)	
	50Hz	60Hz
5	56.4	67.7
7.5	37.6	45.1
9	31.3	37.6
12.5	22.6	27.1
15	18.8	22.6
18	15.7	18.8
25	11.3	13.5
30	9.4	11.3
36	7.8	9.4
50	5.6	6.8
60	4.7	5.6
75	3.8	4.5
90	3.1	3.8
100	2.8	3.4
120	2.4	2.8
150	1.9	2.3
180	1.6	1.9

※ This table reference values are based on Panasonic motor(1400 rpm,60Hz)  
Chinese brand motor(1300 rpm, 60Hz)  
※ Reference values may vary with load condition.

# Flat Belt Conveyor (Customized Width Type)

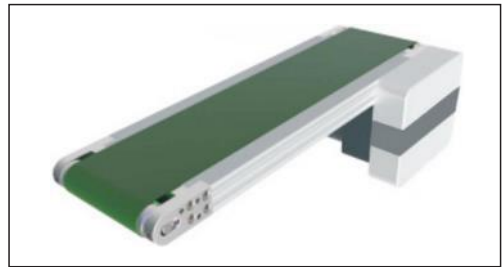
Guided Belt to Prevent Lateral Movement.  
End Drive, 2-Groove Frame (Pulley Dia. 30mm)

**Features:** Belt width could be customized in the range of 30~300mm with 10mm increment. The guided belt maintains straight movement,

**Specification:**

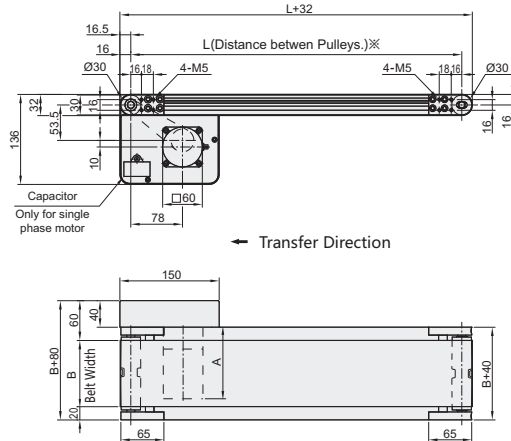
**FBC32-50-2000-25-TA220-SCM-5-A-N**

① ② ③ ④ ⑤ ⑥ ⑦ ⑧ ⑨

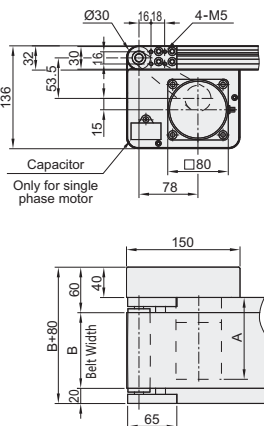


① Part Number	② Width B 10mm increments	③ Length L (5mm Increment)	Motor				⑧ Belt Specification	⑨ Motor manufacturer Selection
			④ Output(W)	⑤ Voltage(V)	⑥ Specification	⑦ Gearhead Reduction Ratio		
FBC32	50~300	190~2000	6 25	TA100 Single Phase TA220 Single Phase	SCM Variable Speed Motor	5 7.5 9 12.5 15 18 25 30 36 50 60 75 90 100 120 150 180	A(General, Green) B(General, White) C(For sliding, Green) D(For sliding, White) E(Static conductive Black) F(Food grade, White) G(Oil resistant, Navy Blue) H(None-Stick food grade, White)	Chinese brand  Panasonic Motor
			25	SA200 Three Phase	INV Induction Motor + Inverter	* 5-9 not applicable for 6W motor		

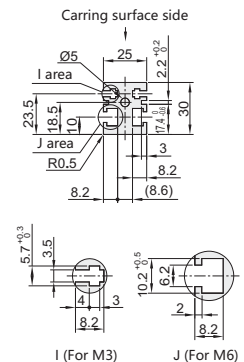
## Motor Power: 6W



## Motor Power: 25W



## Profile cross section



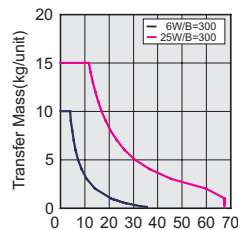
※ L ≥ 290, 3 nuts installed in each groove.

□ All above drawing is according to Belt specification A.

## Motor size A

Output (W)	Motor		Reduction ratio	Motor length A
	Specification	Manufacturer		
6W	Constant speed motor	Chinese	5~18	117
			20~180	127
		Panasonic	5~18	111
			20~180	118
25W	Three phase motor	Chinese	5~18	117
			20~180	128.5
	Constant speed motor	Chinese	5~18	128
			20~180	138.5
	Three phase motor	Panasonic	5~18	115
			20~180	125

## Convey Capacity



※ Reference value may vary with different belt

## Gearhead Reduction Ratio

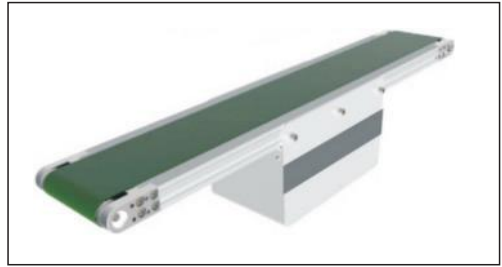
Gearhead Reduction Ratio	Belt Speed(m/min)	
	50Hz	60Hz
5	56.4	67.7
7.5	37.6	45.1
9	31.3	37.6
12.5	22.6	27.1
15	18.8	22.6
18	15.7	18.8
25	11.3	13.5
30	9.4	11.3
36	7.8	9.4
50	5.6	6.8
60	4.7	5.6
75	3.8	4.5
90	3.1	3.8
100	2.8	3.4
120	2.4	2.8
150	1.9	2.3
180	1.6	1.9

★ This table reference values are based on Panasonic motor(1400 rpm,60Hz)  
Chinese brand motor(1300 rpm, 60Hz)

★ Reference values may vary with load condition.

## Flat Belt Conveyor (Customized width Type) Center Drive, 2-Groove Frame (Pulley Dia. 30mm)

**Features:** The center drive section is adjustable. Belt tension can be adjusted inside the drive section.



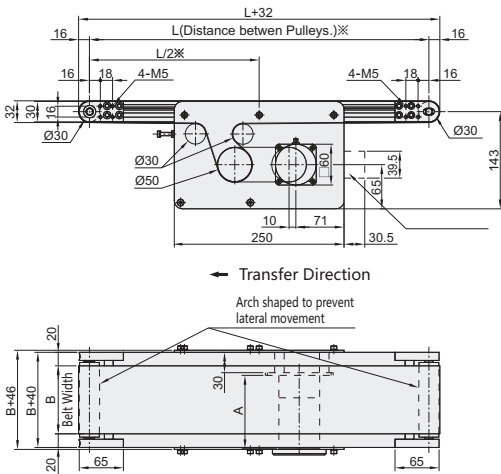
**Specification:**

**FBC33-30-2000-25-TA220-SCM-5-A-N**

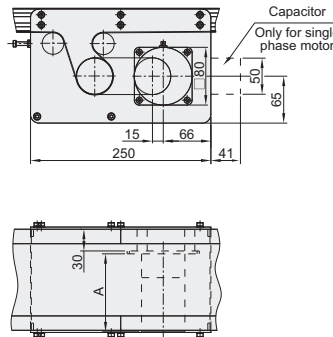
① ② ③ ④ ⑤ ⑥ ⑦ ⑧ ⑨

Type		③Length L (5mm Increment)	Motor				⑧Belt: Specification	⑨ Motor manufacturer Selection
①Part Number	②Width B 10mm increments		④Output(W)	⑤Voltage(V)	⑥Specification	⑦Gearhead Reduction Ratio		
FBC33	30~300	355~2000	6	TA100 Single Phase TA220 Single Phase	SCM Variable Speed Motor	5 7.5 9 12.5	A(General, Green) B(General, White) C(For sliding, Green) D(For sliding, White) E(Static conductive Black) F(Food grade, White) G(Oil resistant, Navy Blue) H(None-Stick food grade, White)	Chinese brand Panasonic Motor
			15 18 25 30					
25	SA200 Three Phase	INV Induction Motor + Inverter	36 50 60 75					
90 100 120 150 180								

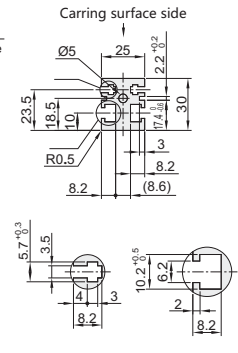
**Motor Power: 6W**



**Motor Power: 25W**



**Profile cross section**

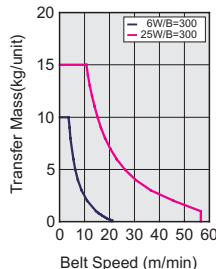


- ※ L ≥ 455, 4 nuts installed in each groove.
- Drive unit could be moved in the range of profile groove.
- All above drawing is according to Belt specification A.

**Motor size A**

Output (W)	Motor		Reduction ratio	Motor length A
	Specification	Manufacturer		
6W	Constant speed motor	Chinese	5~18	117
			20~180	127
		Panasonic	5~18	111
			20~180	118
25W	Three phase motor	Chinese	5~18	117
			20~180	128.5
	Constant speed motor	Chinese	5~18	128
			20~180	138.5
	Three phase motor	Panasonic	5~18	115
			Constant speed motor	5~180

**Convey Capacity**



※ Reference value may vary with different belt

**Gearhead Reduction Ratio**

Gearhead Reduction Ratio	Belt Speed(m/min)	
	50Hz	60Hz
5	47.1	56.5
7.5	31.4	37.7
9	26.2	31.4
12.5	18.8	22.6
15	15.7	18.8
18	13.1	15.7
25	9.4	11.3
30	7.9	9.4
36	6.5	7.9
50	4.7	5.7
60	3.9	4.7
75	3.1	3.8
90	2.6	3.1
100	2.4	2.8
120	2.0	2.4
150	1.6	1.9
180	1.3	1.6

- ★ This table reference values are based on Panasonic motor(1400 rpm,60Hz)
- Chinese brand motor(1300 rpm, 60Hz)
- ★ Reference values may vary with load condition.

# Flat Belt Conveyor (Customized width Type)

Guided Belt to Prevent Lateral Movement.  
Center Drive, 2-Groove Frame (Pulley Dia. 30mm)

**Features:** The center drive section is adjustable. Belt tension can be adjusted inside the drive section. The guided belt maintains straight movement.

**Specification:**

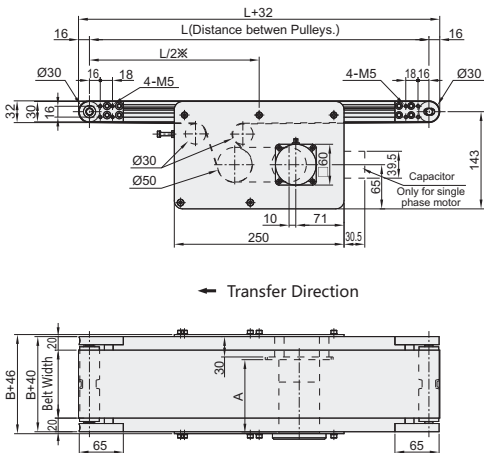
**FBC34-50-2000-25-TA220-SCM-5-A-N**

① ② ③ ④ ⑤ ⑥ ⑦ ⑧ ⑨

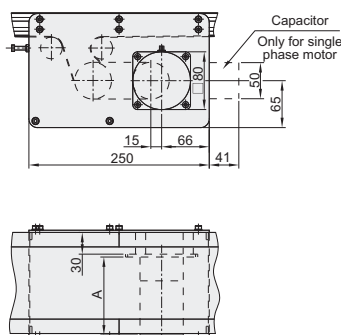


① Part Number	Type	③ Length L (5mm Increment)	Motor				⑧ Belt Specification	⑨ Motor manufacturer Selection
	② Width B 10mm increments		④ Output(W)	⑤ Voltage(V)	⑥ Specification	⑦ Gearhead Reduction Ratio		
FBC34	50~300	355~2000	6	TA100 Single Phase	SCM Variable Speed Motor	5 7.5 9 12.5	A(General, Green) B(General, White) C(For sliding, Green) D(For sliding, White) E(Static conductive Black) F(Food grade, White) G(Oil resistant, Navy Blue) H(None-Stick food grade, White)	Chinese brand  Panasonic Motor
			25	TA220 Single Phase		15 18 25 30 36 50 60 75 90 100 120 150 180		
			25	SA200 Three Phase	INV Induction Motor + Inverter	* 5-9 not applicable for 6W motor		

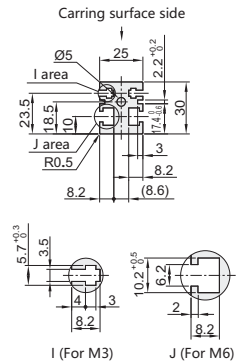
**Motor Power: 6W**



**Motor Power: 25W**



**Profile cross section**

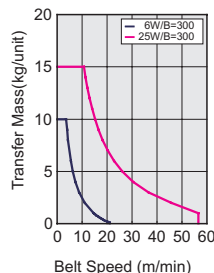


- ※ L ≥ 455, 4 nuts installed in each groove.
- Drive unit could be move in the range of profile groove.
- All above drawing is according to Belt specification A.

**Motor size A**

Output (W)	Motor		Reduction ratio	Motor length A
	Specification	Manufacturer		
6W	Constant speed motor	Chinese	5~18	117
			20~180	127
		Panasonic	5~18	111
			20~180	118
25W	Three phase motor	Chinese	5~18	117
			20~180	128.5
	Constant speed motor	Chinese	5~18	128
			20~180	138.5
	Three phase motor	Panasonic	5~18	115
			20~180	125

**Convey Capacity**



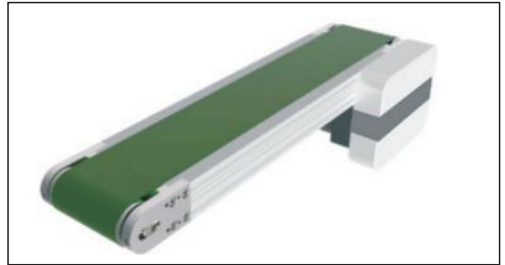
※ Reference value may vary with different belt

**Gearhead Reduction Ratio**

Gearhead Reduction Ratio	Belt Speed(m/min)	
	50Hz	60Hz
5	47.1	56.5
7.5	31.4	37.7
9	26.2	31.4
12.5	18.8	22.6
15	15.7	18.8
18	13.1	15.7
25	9.4	11.3
30	7.9	9.4
36	6.5	7.9
50	4.7	5.7
60	3.9	4.7
75	3.1	3.8
90	2.6	3.1
100	2.4	2.8
120	2.0	2.4
150	1.6	1.9
180	1.3	1.6

- ★ This table reference values are based on Panasonic motor(1400 rpm,60Hz)  
Chinese brand motor(1300 rpm, 60Hz)
- ★ Reference values may vary with load condition.

## Flat Belt Conveyor (Customized Width Type) End Drive, 3-Groove Frame (Pulley Dia. 30mm)



**Features:** Belt width could be customized in the range of 40-300mm with 10mm increment.

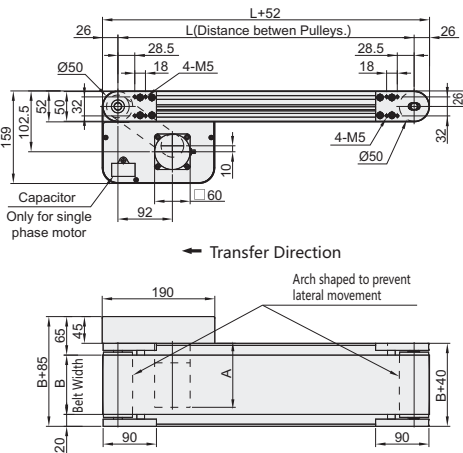
### Specification:

**FBC51-60-2000-25-TA220-SCM-12.5-A-N**

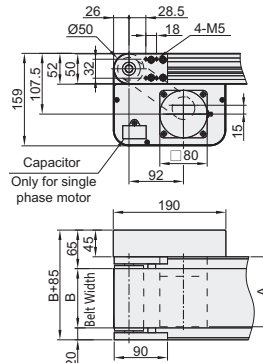
- ① ② ③ ④ ⑤ ⑥ ⑦ ⑧ ⑨

① Part Number	② Width B 10mm increments	③ Length L (5mm Increment)	Motor				⑧ Belt Specification	⑨ Motor manufacturer Selection
			④ Output (W)	⑤ Voltage (V)	⑥ Specification	⑦ Gearhead Reduction Ratio		
FBC51	40~300	240~2000	6 25 40	TA100 Single Phase Variable TA220 Single Phase	SCM Variable Speed Motor	5 7.5 9 12.5 15 18 25 30 36 50 60 75 90 100 120 150 180	A (General, Green) B (General, White) C (For sliding, Green) D (For sliding, White) E (Static conductive Black) F (Food grade, White) G (Oil resistant, Navy Blue) H (None-Stick food grade, White)	Chinese brand  Panasonic Motor
			25 40	SA200 Three Phase	INV Induction Motor + Inverter	* 5-9 not applicable for 6W motor		

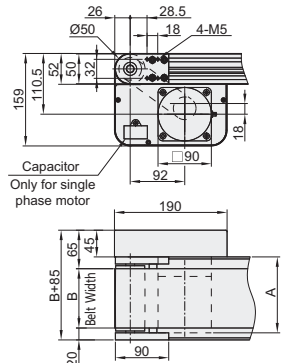
#### Motor Power: 6W



#### Motor Power: 25W

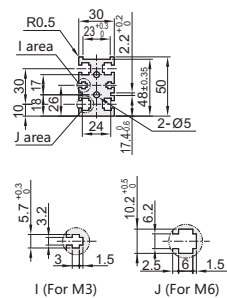


#### Motor Power: 40W



- ※ L ≥ 340, 3 nuts installed in each groove.
- ① Countersinks for nut installation are available when request.
- ① All above drawing is according to Belt specification A.

#### Profile cross section



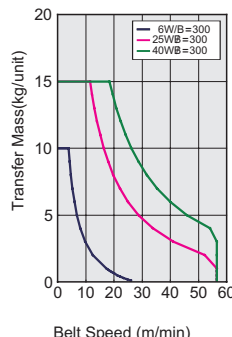
#### Motor size A

Output (W)	Motor Specification		Reduction ratio	Motor length A
	Specification	Manufacturer		
6W	Constant speed motor	Chinese	5~18	117
			20~180	127
	Three phase motor	Panasonic	5~18	111
			20~180	118
	Constant speed motor	Chinese	5~18	117
			20~180	128.5
25W	Three phase motor	Chinese	5~18	128
			20~180	138.5
	Constant speed motor	Panasonic	5~180	115
				125
	Three phase motor	Chinese	5~18	147
			20~180	165
Constant speed motor	Chinese	5~18	157	
		20~180	175	
Three phase motor	Panasonic	5~180	142	
		Constant speed motor		152

#### Gearhead Reduction Ratio

Gearhead Reduction Ratio	Belt Speed (m/min)	
	50Hz	60Hz
5	47.1	56.5
7.5	31.4	37.7
9	26.2	31.4
12.5	18.8	22.6
15	15.7	18.8
18	13.1	15.7
25	9.4	11.3
30	7.9	9.4
36	6.5	7.9
50	4.7	5.7
60	3.9	4.7
75	3.1	3.8
90	2.6	3.1
100	2.4	2.8
120	2.0	2.4
150	1.6	1.9
180	1.3	1.6

#### Convey Capacity



- ※ This table reference values are based on Panasonic motor (1400 rpm, 60Hz)
- Chinese brand motor (1300 rpm, 60Hz)
- ※ Reference values may vary with load condition.

- ① Compatible with GB/DIN/JIS Standard hex nut

# Flat Belt Conveyor (Customized Width Type)

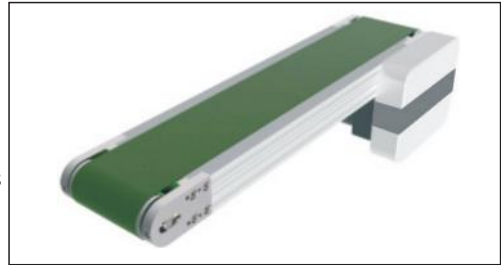
Guided Belt to Prevent Lateral Movement.  
End Drive, 3-Groove Frame (Pulley Dia. 50mm)

**Features:** Belt width could be customized in the range of 40-300mm with 10mm increment. The guided belt maintains straight movement.

**Specification:**

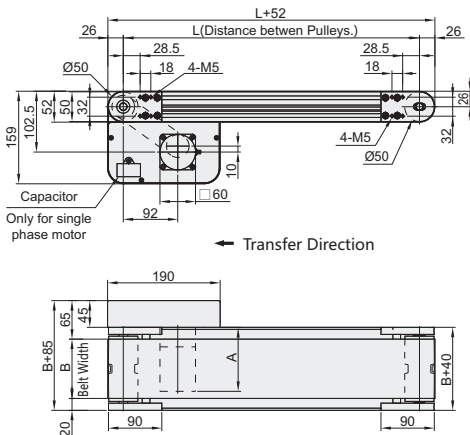
**FBC52-50-2000-25-TA220-SCM-5-A-N**

- ① ② ③ ④ ⑤ ⑥ ⑦ ⑧ ⑨

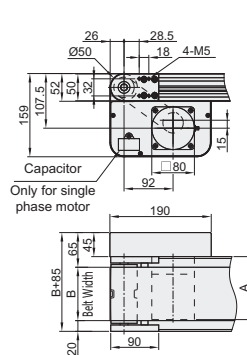


① Part Number	Type	② Width B 10mm increments	③ Length L (5mm Increment)	Motor			⑧ Belt Specification	⑨ Motor manufacturer Selection	
				④ Output(W)	⑤ Voltage(V)	⑥ Specification			⑦ Gearhead Reduction Ratio
FBC52		50~300	240~2000	6 25 40	TA100 Single Phase TA220 Single Phase	SCM Variable Speed Motor	5 7.5 9 12.5 15 18 25 30 36 50 60 75 90 100 120 150 180	A(General, Green) B(General, White) C(For sliding, Green) D(For sliding, White) E(Static conductive Black) F(Food grade, White) G(Oil resistant, Navy Blue) H(Non-Stick food grade, White)	Chinese brand  Panasonic Motor
				25 40	SA200 Three Phase	INV Induction Motor + Inverter	* 5~9 not applicable for 6W motor		

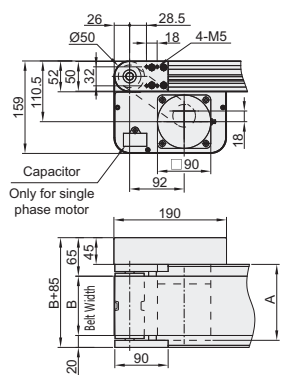
**Motor Power: 6W**



**Motor Power: 25W**



**Motor Power: 40W**

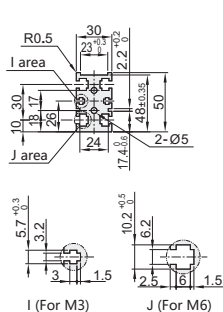


- ※ L ≥ 340, 3 nuts installed in each groove.
- Countersinks for nut installation are available when request.
- All above drawing is according to Belt specification A.

**Motor size A**

Output (W)	Motor		Reduction ratio	Motor length A
	Specification	Manufacturer		
6W	Constant speed motor	Chinese	5~18	117
		Panasonic	20~180	127
	Three phase motor	Chinese	5~18	111
		Panasonic	20~180	118
25W	Constant speed motor	Chinese	5~18	117
		Panasonic	20~180	128.5
	Three phase motor	Chinese	5~18	128
		Panasonic	20~180	138.5
40W	Constant speed motor	Chinese	5~18	115
		Panasonic	5~180	125
	Three phase motor	Chinese	5~18	147
		Panasonic	20~180	165
Constant speed motor	Chinese	5~18	157	
	Panasonic	20~180	175	
Constant speed motor	Chinese	5~18	142	
	Panasonic	5~180	152	

**Profile cross section**

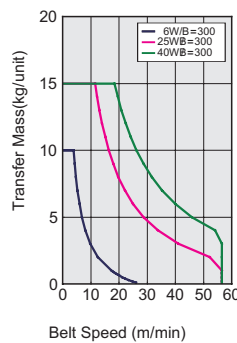


- Compatible with GB/DIN/JIS Standard hex nut

**Gearhead Reduction Ratio**

Gearhead Reduction Ratio	Belt Speed(m/min)	
	50Hz	60Hz
5	47.1	56.5
7.5	31.4	37.7
9	26.2	31.4
12.5	18.8	22.6
15	15.7	18.8
18	13.1	15.7
25	9.4	11.3
30	7.9	9.4
36	6.5	7.9
50	4.7	5.7
60	3.9	4.7
75	3.1	3.8
90	2.6	3.1
100	2.4	2.8
120	2.0	2.4
150	1.6	1.9
180	1.3	1.6

**Convey Capacity**



※ Reference value may vary with different belt

- ※ This table reference values are based on Panasonic motor(1400 rpm, 60Hz)
- Chinese brand motor(1300 rpm, 60Hz)
- ※ Reference values may vary with load condition.

## Flat Belt Conveyor (Customized Width Type) Center Drive, 2-Groove Frame (Pulley Dia. 50mm)

**Features:** The center drive section is adjustable. Belt tension can be adjusted inside the drive section.



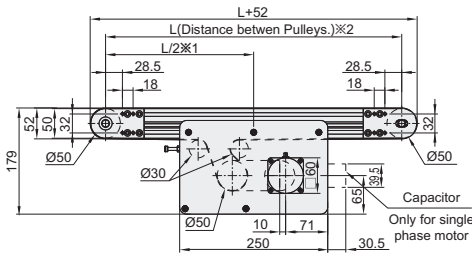
**Specification:**

**FBC53-50-2000-25-TA220-SCM-5-A-N**

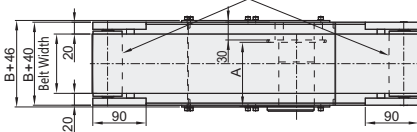
① ② ③ ④ ⑤ ⑥ ⑦ ⑧ ⑨

Type		③Length L (5mm Increment)	Motor				⑧Belt Specification	⑨ Motor manufacturer Selection
①Part Number	②Width B 10mm increments		④Output(W)	⑤Voltage(V)	⑥Specification	⑦Gearhead Reduction Ratio		
FBC53	40~300	385~2000	6 25 40	TA100 Single Phase TA220 Single Phase	SCM Variable Speed Motor	5 7.5 9 12.5 15 18 25 30 36 50 60 75 90 100 120 150 180	A(General,Green) B(General,White) C(For sliding, Green) D(For sliding, White) E(Static conductive Black) F(Food grade, White) G(Oil resistant, Navy Blue) H(None-Stick food grade, White)	Chinese brand  Panasonic Motor
			25 40	SA200 Three Phase	INV Induction Motor + Inverter	* 5-9 not applicable for 6W motor		

**Motor Power: 6W**



Transfer Direction  
Arch shaped to prevent lateral movement

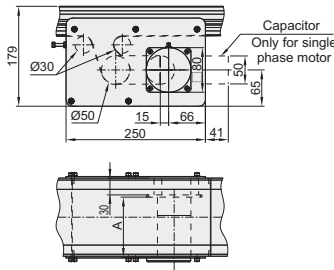


- ※ L ≥ 455, 4 nuts installed in each groove.
- Drive unit could be moved in the range of profile groove.
- All above drawing is according to Belt specification A.

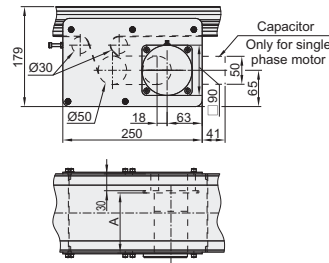
**Motor size A**

Output (W)	Motor		Reduction ratio	Motor length A
	Specification	Manufacturer		
6W	Constant speed motor	Chinese	5~18	117
			20~180	127
	Constant speed motor	Panasonic	5~18	111
			20~180	118
25W	Three phase motor	Chinese	5~18	117
			20~180	128.5
	Constant speed motor	Chinese	5~18	128
			20~180	138.5
	Three phase motor	Panasonic	5~18	115
			20~180	125
40W	Three phase motor	Chinese	5~18	147
			20~180	165
	Constant speed motor	Chinese	5~18	157
			20~180	175
	Three phase motor	Panasonic	5~18	142
			20~180	152

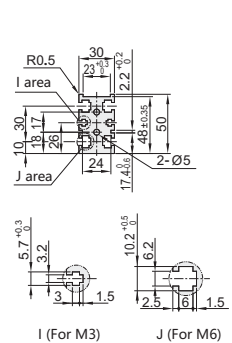
**Motor Power: 25W**



**Motor Power: 40W**



**Profile cross section**

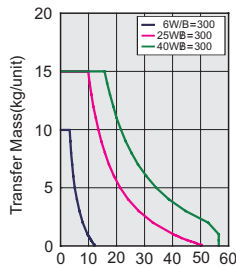


- Compatible with GB/DIN/JIS Standard hex nut

**Gearhead Reduction Ratio**

Gearhead Reduction Ratio	Belt Speed(m/min)	
	50Hz	60Hz
5	47.1	56.5
7.5	31.4	37.7
9	26.2	31.4
12.5	18.8	22.6
15	15.7	18.8
18	13.1	15.7
25	9.4	11.3
30	7.9	9.4
36	6.5	7.9
50	4.7	5.7
60	3.9	4.7
75	3.1	3.8
90	2.6	3.1
100	2.4	2.8
120	2.0	2.4
150	1.6	1.9
180	1.3	1.6

**Convey Capacity**



Belt Speed (m/min)  
※ Reference value may vary with different belt

- ★ This table reference values are based on Panasonic motor(1400 rpm,60Hz)  
Chinese brand motor(1300 rpm, 60Hz)
- ★ Reference values may vary with load condition.



# Flat Belt Conveyor (Customized Width Type)

Guided Belt to Prevent Lateral Movement.  
Center Drive, 2-Groove Frame (Pulley Dia. 50mm)

**Features:** The center drive section is adjustable. Belt tension can be adjusted inside the drive section. The guided belt maintains straight movement.

**Specification:**

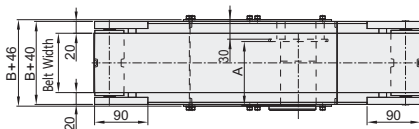
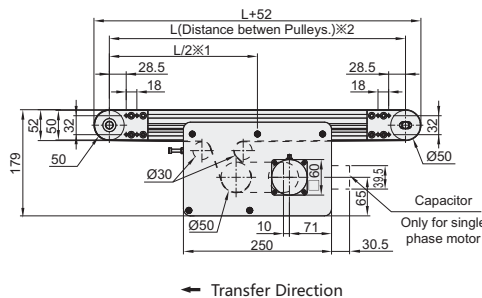
**FBC54-50-2000-25-TA220-SCM-5-A-N**

- ① ② ③ ④ ⑤ ⑥ ⑦ ⑧ ⑨



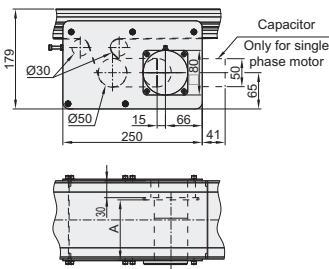
① Part Number	Type	③ Length L (5mm Increment)	Motor				⑧ Belt Specification	⑨ Motor manufacturer Selection
	② Width B 10mm increments		④ Output(W)	⑤ Voltage(V)	⑥ Specification	⑦ Gearhead Reduction Ratio		
FBC54	50~300	385~2000	6 25 40	TA100 Single Phase TA220 Single Phase	SCM Variable Speed Motor	5 7.5 9 12.5 15 18 25 30 36 50 60 75 90 100 120 150 180	A(General, Green) B(General, White) C(For sliding, Green) D(For sliding, White) E(Static conductive Black) F(Food grade, White) G(Oil resistant, Navy Blue) H(Non-Stick food grade, White)	Chinese brand  Panasonic Motor
			25 40			SA200 Three Phase		

**Motor Power: 6W**

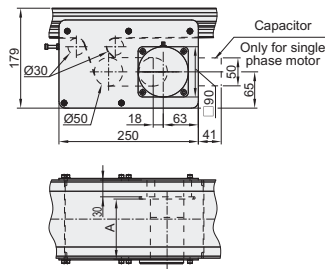


※ L ≥ 485, 4 nuts installed in each groove.  
 ① Drive unit could be moved in the range of profile groove.  
 ② All above drawing is according to Belt specification A.

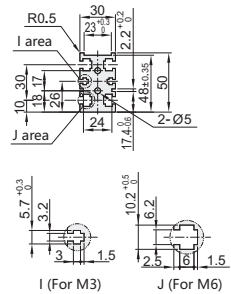
**Motor Power: 25W**



**Motor Power: 40W**



**Profile cross section**

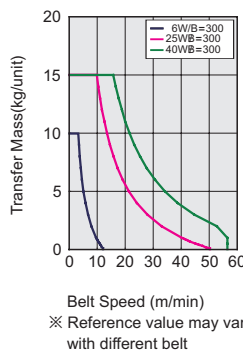


① Compatible with GB/DIN/JIS Standard hex nut

**Motor size A**

Output (W)	Motor		Reduction ratio	Motor length A
	Specification	Manufacturer		
6W	Constant speed motor	Chinese	5~18	117
			20~180	127
		Panasonic	5~18	111
			20~180	118
25W	Three phase motor	Chinese	5~18	117
			20~180	128.5
	Constant speed motor	Chinese	5~18	128
			20~180	138.5
	Three phase motor	Panasonic	5~180	115
			Constant speed motor	125
40W	Three phase motor	Chinese	5~18	147
			20~180	165
	Constant speed motor	Chinese	5~18	157
			20~180	175
	Three phase motor	Panasonic	5~180	142
			Constant speed motor	152

**Convey Capacity**



**Gearhead Reduction Ratio**

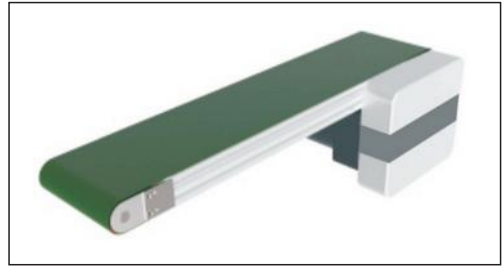
Gearhead Reduction Ratio	Belt Speed(m/min)	
	50Hz	60Hz
5	47.1	56.5
7.5	31.4	37.7
9	26.2	31.4
12.5	18.8	22.6
15	15.7	18.8
18	13.1	15.7
25	9.4	11.3
30	7.9	9.4
36	6.5	7.9
50	4.7	5.7
60	3.9	4.7
75	3.1	3.8
90	2.6	3.1
100	2.4	2.8
120	2.0	2.4
150	1.6	1.9
180	1.3	1.6

※ This table reference values are based on Panasonic motor(1400 rpm, 60Hz)  
 Chinese brand motor(1300 rpm, 60Hz)  
 ※ Reference values may vary with load condition.

## Flat Belt Conveyor (Full Belt Type)

### End Drive, 2-Groove Frame (Pulley Dia. 30mm)

**Features:** Conveyor with a full-width belt that enables almost the entire surface for transporting.



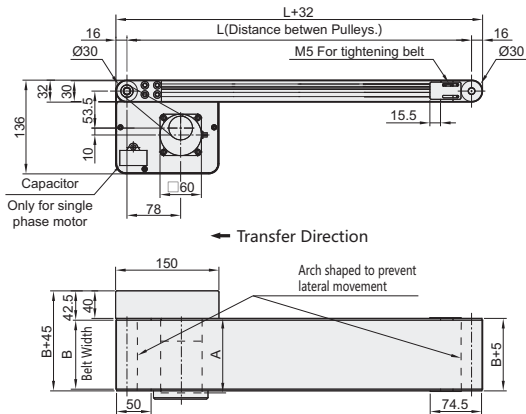
**Specification:**

**FBF31-60-2000-25-TA220-SCM-12.5-A-N**

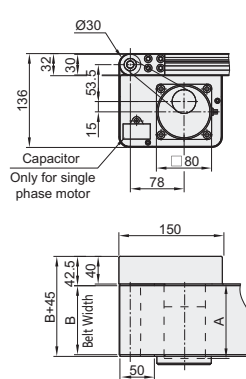
- ① ② ③ ④ ⑤ ⑥ ⑦ ⑧ ⑨

① Part Number	Type	③ Length L (5mm Increment)	Motor				⑧ Belt Specification	⑨ Motor manufacturer Selection
	② Width B 10mm increments		④ Output(W)	⑤ Voltage(V)	⑥ Specification	⑦ Gearhead Reduction Ratio		
FBF31	60~300	280~2000	6	TA100 Single Phase TA220 Single Phase	SCM Variable Speed Motor	5	A(General,Green) B(General,White) C(For sliding, Green) D(For sliding, White) E(Static conductive Black) F(Food grade, White) G(Oil resistant, Navy Blue) H(None-Stick food grade, White) K(Green PVC)	Chinese brand  Panasonic Motor
			25			SA200 Three Phase		

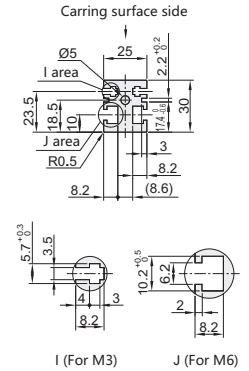
**Motor Power: 6W**



**Motor Power: 25W**



**Profile cross section**



Compatible with GB/DIN/JIS Standard hex nut

※ L≤360, None of countersink for nut installation. But 3 nuts installed in each groove.

① All above drawing is according to Belt specification A.

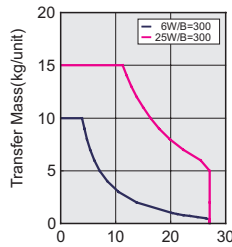
② Countersinks are available when request.

③ Hex nuts can't move in Z area.

**Motor size A**

Output (W)	Motor		Reduction ratio	Motor length A
	Specification	Manufacturer		
6W	Constant speed motor	Chinese	5~18	117
			20~180	127
		Panasonic	5~18	111
			20~180	118
25W	Three phase motor	Chinese	5~18	117
			20~180	128.5
	Constant speed motor	Chinese	5~18	128
			20~180	138.5
	Three phase motor	Panasonic	5~180	115
				125

**Convey Capacity**



Reference value may vary with different belt

**Gearhead Reduction Ratio**

Gearhead Reduction Ratio	Belt Speed(m/min)	
	50Hz	60Hz
12.5	22.6	27.1
15	18.8	22.6
18	15.7	18.8
25	11.3	13.5
30	9.4	11.3
36	7.8	9.4
50	5.6	6.8
60	4.7	5.6
75	3.8	4.5
90	3.1	3.8
100	2.8	3.4
120	2.4	2.8
150	1.9	2.3
180	1.6	1.9

Reference values are based on Panasonic motor(1400 rpm,60Hz) Chinese brand motor(1300 rpm, 60Hz) Reference values may vary with load condition.

# Flat Belt Conveyor (Full Belt Type)

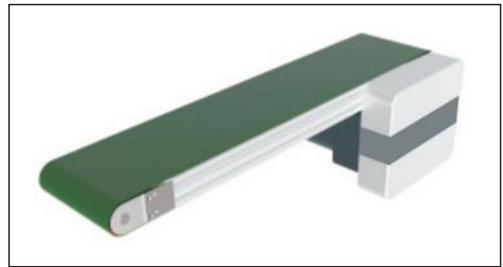
Guided Belt to Prevent Lateral Movement.  
End Drive, 2-Groove Frame (Pulley Dia. 30mm)

**Features:** Conveyor with a full-width belt that enables almost the entire surface for transporting. The guided belt maintains straight movement.

**Specification:**

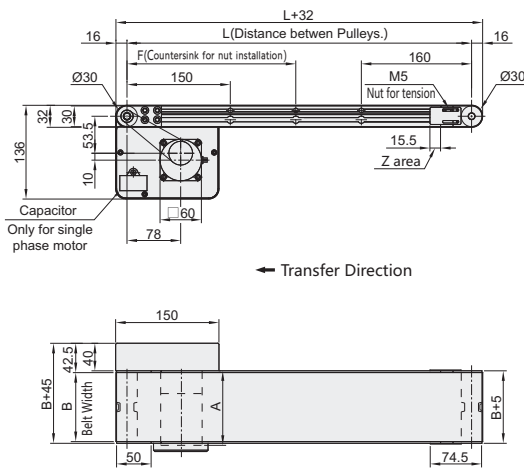
**FBF32-70-2000-25-TA220-SCM-12.5-A-N-F200**

① ② ③ ④ ⑤ ⑥ ⑦ ⑧ ⑨ ⑩

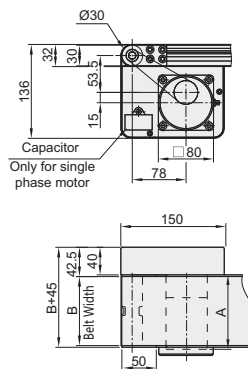


Type		③Length L (5mm Increment)	Motor				⑧Belt Specification	⑨ Motor manufacturer Selection	⑩ Add Countersink (5 Increment)
①Part Number	②Width B 10mm increments		④Output(W)	⑤Voltage(V)	⑥Specification	⑦Gearhead Reduction Ratio			
FBF32	70~300	280~2000	6	TA100 Single Phase	SCM Variable Speed Motor	5 7.5 9 12.5 15 18 25 30 36 50 60 75 90 100 120 150 180	A(General,Green) B(General,White) C(For sliding, Green) D(For sliding, White) E(Static conductive Black) F(Food grade, White) G(Oil resistant, Navy Blue) H(Non-Stick food grade, White)	Chinese brand  Panasonic Motor	Default (None of countersink)  F (Add countersink)  190 < F < L-210
			25	SA200 Three Phase	INV Induction Motor + Inverter	*5~9 not applicable for 6W motor			

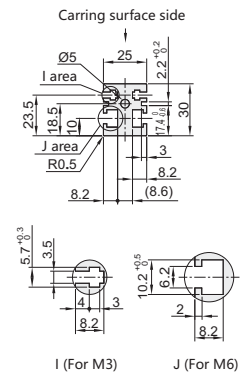
## Motor Power: 6W



## Motor Power: 25W



## Profile cross section



Compatible with GB/DIN/JIS  
Standard hex nut

※ L≤360, None of countersink for nut installation. But 3 nuts installed in each groove.

① All above drawing is according to Belt specification A.

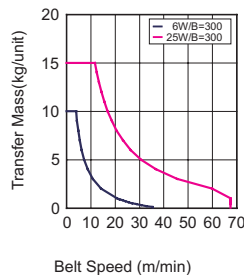
② Countersinks are available when request.

③ Hex nuts can't move in Z area.

## Motor size A

Output (W)	Motor		Reduction ratio	Motor length A
	Specification	Manufacturer		
6W	Constant speed motor	Chinese	5~18	117
			20~180	127
		Panasonic	5~18	111
			20~180	118
25W	Three phase motor	Chinese	5~18	117
			20~180	128.5
	Constant speed motor	Chinese	5~18	128
			20~180	138.5
	Three phase motor	Panasonic	5~180	115
			Constant speed motor	5~180

## Convey Capacity



※ Reference value may vary with different belt

## Gearhead Reduction Ratio

Gearhead Reduction Ratio	Belt Speed(m/min)	
	50Hz	60Hz
5	56.4	67.7
7.5	37.6	45.1
9	31.3	37.6
12.5	22.6	27.1
15	18.8	22.6
18	15.7	18.8
25	11.3	13.5
30	9.4	11.3
36	7.8	9.4
50	5.6	6.8
60	4.7	5.6
75	3.8	4.5
90	3.1	3.8
100	2.8	3.4
120	2.4	2.8
150	1.9	2.3
180	1.6	1.9

※ This table reference values are based on  
Panasonic motor(1400 rpm,60Hz)  
Chinese brand motor(1300 rpm, 60Hz)

※ Reference values may vary with load condition.

## Flat Belt Conveyor (Motor Integrated Type) 3-Groove Frame (Pulley Dia.70)

**Features:** Overall height has been reduced by half with the motor integrated inside.

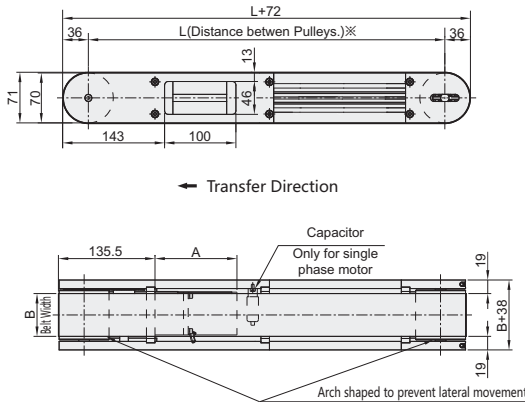


**Specification:**

**FBW71-60-2000-6-TA100-SCM-15-A-N**

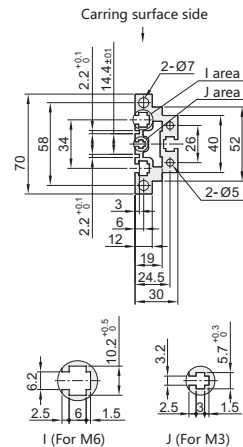
- ① ② ③ ④ ⑤ ⑥ ⑦ ⑧ ⑨

Type		③Length L (5mm Increment)	Motor				⑧Belt Specification	⑨ Motor manufacturer Selection
①Part Number	②Width B		④Output(W)	⑤Voltage(V)	⑥Specification	⑦Gearhead Reduction Ratio		
FBW71	60	415~2000	6	TA100 Single Phase	SCM	15 18 25 30 36 50 60 75 90 100 120 150 180	A(General, Green) B(General, White) C:(For sliding, Green) D:(For sliding, White) E:(Static conductive Black) F:(Food grade, White) G:(Oil resistant, Navy Blue) H:(None-Stick food grade, White)	Chinese brand Panasonic Motor
	100			TA220 Single Phase		* 5-9 not applicable for 6W motor		
	150							



※ L ≤ 1000, Four nuts installed in each groove.  
L > 1000, 6 nuts installed in each groove.

**Profile cross section**



Compatible with GB/DIN/JIS Standard hex nut

**Gearhead Reduction Ratio**

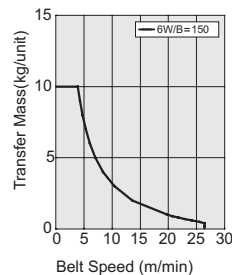
Gearhead Reduction Ratio	Belt Speed(m/min)	
	50Hz	60Hz
15	22.0	26.4
18	18.3	22.0
25	13.2	15.8
30	11.0	13.2
36	9.2	11.0
50	6.6	7.9
60	5.5	6.6
75	4.4	5.3
90	3.7	4.4
100	3.3	4.0
120	2.7	3.3
150	2.2	2.6
180	1.8	2.2

★ This table reference values are based on  
Panasonic motor(1400 rpm, 60Hz)  
Chinese brand motor(1300 rpm, 60Hz)  
★ Reference values may vary with load condition.

**Motor size A**

Output (W)	Motor		Reduction ratio	Motor length A
	Specification	Manufacturer		
6W	Constant speed motor	Chinese	5~18	117
			20~180	127
		Panasonic	5~18	111
			20~180	118

**Convey Capacity**



※ Reference value may vary with different belt

# Flat Belt Conveyor (Short Length Type)

Guided Belt to Prevent Lateral Movement.  
Center Drive, 2-Groove Frame (Pulley Dia. 30mm)

Features: Short length type is suitable for inter-connection between short distance. The guided belt maintains straight movement.

## Specification:

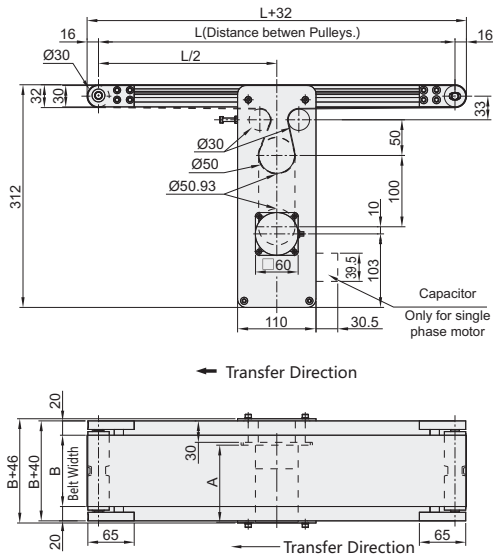
**FBS31-50-600-25-TA220-SCM-5-A-N**

① ② ③ ④ ⑤ ⑥ ⑦ ⑧ ⑨



Type		③Length L (5mm Increment)	Motor				⑧Belt: Specification	⑨ Motor manufacturer Selection
①Part Number	②Width B 10mm increments		④Output(W)	⑤Voltage(V)	⑥Specification	⑦Gearhead Reduction Ratio		
FBS31	50~300	220~600	6	TA100 Single Phase	SCM Variable Speed Motor	5 7.5 9 12.5	A(General, Green) B(General, White) C(For sliding, Green) D(For sliding, White) E(Static conductive Black) F(Food grade, White) G(Oil resistant, Navy Blue) H(None-Stick food grade, White)	Chinese brand  Panasonic Motor
			25	TA220 Single Phase		15 18 25 30 36 50 60 75 90 100 120 150 180		
			25	SA200 Three Phase	INV Induction Motor + Inverter	* 5~9 not applicable for 6W motor		

### Motor Power: 6W

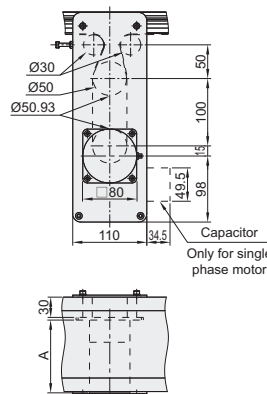


⑩ All above drawing is according to Belt specification A.

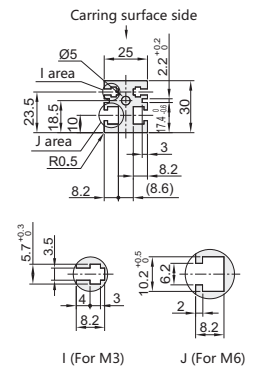
### Motor size A

Output (W)	Motor		Reduction ratio	Motor length A.
	Specification	Manufacturer		
6W	Constant speed motor	Chinese	5~18	117
			20~180	127
		Panasonic	5~18	111
			20~180	118
25W	Three phase motor	Chinese	5~18	117
			20~180	128.5
	Constant speed motor	Chinese	5~18	128
			20~180	138.5
Three phase motor	Panasonic	5~180	115	
		Constant speed motor	5~180	125

### Motor Power: 25W



### Profile cross section



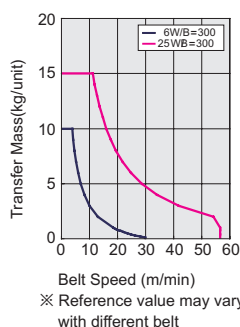
⑩ Compatible with GB/DIN/JIS  
Standard hex nut

### Gearhead Reduction Ratio

Gearhead Reduction Ratio	Belt Speed(m/min)	
	50Hz	60Hz
5	47.1	56.5
7.5	31.4	37.7
9	26.2	31.4
12.5	18.8	22.6
15	15.7	18.8
18	13.1	15.7
25	9.4	11.3
30	7.9	9.4
36	6.5	7.9
50	4.7	5.7
60	3.9	4.7
75	3.1	3.8
90	2.6	3.1
100	2.4	2.8
120	2.0	2.4
150	1.6	1.9
180	1.3	1.6

\* This table reference values are based on  
Panasonic motor(1400 rpm, 60Hz)  
Chinese brand motor(1300 rpm, 60Hz)  
\* Reference values may vary with load condition.

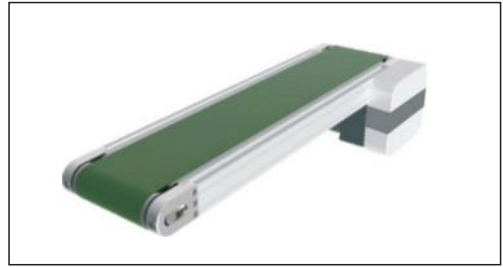
### Convey Capacity



## Flat Belt Conveyor (Heavy Duty Type)

End Drive, 2-Groove Frame (Pulley Dia. 60mm)

**Features:** Heavy load capacity. Output up to 200W, Transfer is up to 5m.

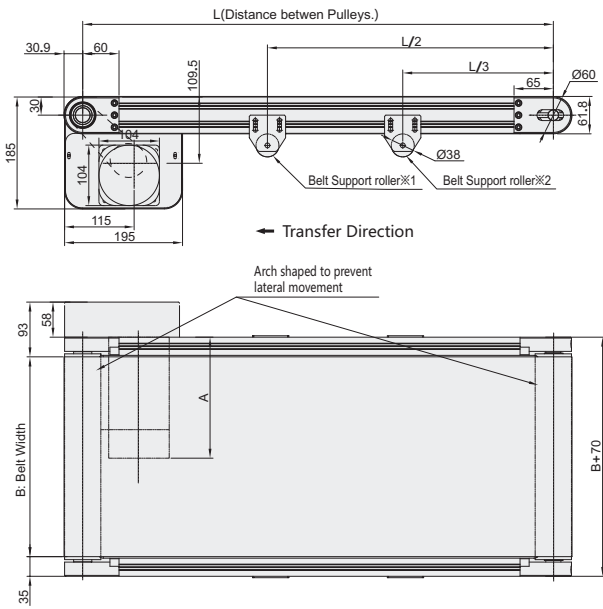


**Specification:**

**FBH61-100-5000-200-TA220-SCM-5-A-N**

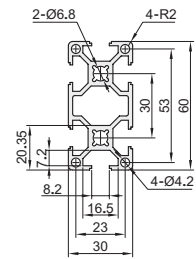
- ① ② ③ ④ ⑤ ⑥ ⑦ ⑧ ⑨

Type		③Length L (5mm Increment)	Motor				⑧Belt Specification	⑨ Motor manufacturer Selection
①Part Number	②Width B 10mm increments		④Output(W)	⑤Voltage(V)	⑥Specification	⑦Gearhead Reduction Ratio		
FBH61	100~1200	600~5000	90	TA100 Single Phase TA220 Single Phase	SCM Variable Speed Motor	5 7.5 9 12.5	A(General,Green) B(General,White) C:(For sliding, Green) D:(For sliding, White) E:(Static conductive Black) F:(Food grade, White) G:(Oil resistant, Navy Blue) H:(None-Stick food grade, White)	Chinese brand  Panasonic Motor  ☐ Panasonic Motor Max power 90W.
						15 18 25 30		
			120	SA200 Three Phase	INV Induction Motor + Inverter	36 50 60 75		
						90 100 120 150 180		
200								



※1 L > 2000, Belt support roller installed.  
 ※2 L > 3500, Belt support roller installed.  
 ☐ All above drawing is according to Belt specification H.

**Profile cross section**



☐ Suitable T Nuts.  
 AHC21-308-M6  
 AHC21-308-M5  
 AHC21-308-M4  
 AHC21-308-M3

**Gearhead Reduction Ratio**

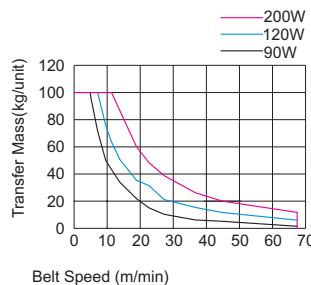
Gearhead Reduction Ratio	Belt Speed(m/min)	
	50HZ	60HZ
5	67.5	80.0
7.5	45.1	53.5
9	37.5	44.5
12.5	27.1	32.1
15	22.5	26.7
18	18.8	22.2
25	13.5	16.0
30	11.2	13.3
36	9.4	11.1
50	6.7	7.9
60	5.5	6.6
75	4.5	5.3
90	3.7	4.4
120	2.8	3.4
150	2.2	2.6
180	1.9	2.3

★ This table reference values are based on  
 Panasonic motor(1400 rpm,60Hz)  
 Chinese brand motor(1300 rpm, 60Hz)  
 ★ Reference values may vary with load condition.

**Motor size A**

Output (W)	Motor		Reduction ratio	Motor length A
	Specification	Manufacturer		
90	Three phase motor	Chinese	5~20	183
			25~180	205
	Constant speed motor		5~20	183
			25~180	205
	Three phase motor	Panasonic	5~180	195
			Constant speed motor	5~180
120	Three phase motor	Chinese	5~20	183
			25~180	205
	Constant speed motor		5~20	183
			25~180	205
	Three phase motor	Chinese	5~20	215
			25~180	230
Constant speed motor	Chinese	5~20	215	
		25~180	230	

**Convey Capacity**



※ Reference value may vary with different belt

# Timing Belt Conveyor (Narrow Type)

Single Track, Head Drive, 2/3-Groove Frame (Pulley Dia. 19/20mm)

**Features:** A narrow width conveyor with 10,20mm width belt. Space saving. Suitable for intra equipment application and Small components convey.



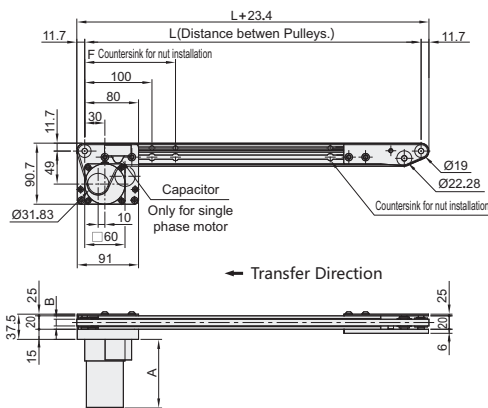
**Specification:**

**FTS22-20-2000-6-TA220-SCM-12.5-A-N-F200**

- ① ② ③ ④ ⑤ ⑥ ⑦ ⑧ ⑨ ⑩

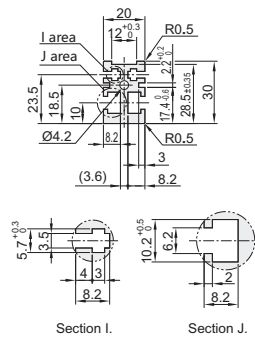
Type		③Length L (5mm Increment)	Motor				⑧Belt Specification	⑨ Motor manufacturer Selection	⑩ Add Countersink (5 Increment)
①Part Number	②Width B		④Output(W)	⑤Voltage(V)	⑥Specification	⑦Gearhead Reduction Ratio			
FTS22	10	245~2000	6	TA100 Single Phase TA220 Single Phase	SCM Variable Speed Motor	5 7.5 9 12.5 15	White for general application  Green for sliding	Chinese brand  Panasonic Motor	Default (None of countersink)  F (Add countersink)  190 < F < L-210
	20					18 25 30 36 50 60 75 90 100 120 150 180			

**FTS22-B10**



※ L ≤ 260, None of countersink for nut installation. But 3 nuts installed in each groove.

**Profile cross section**

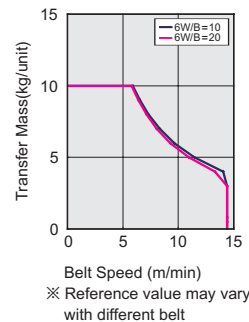


☐ Compatible with GB/DIN/JIS Standard hex nut

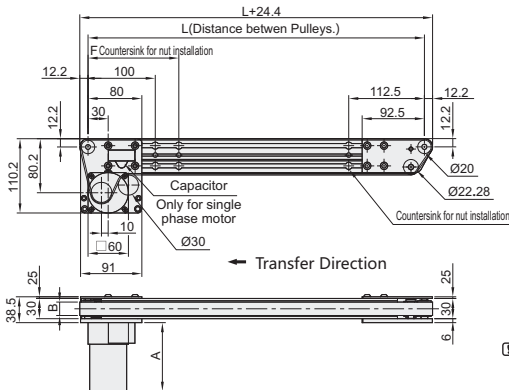
**Motor size A**

Output (W)	Motor		Reduction ratio	A
	Specification	Manufacturer		
6W	Constant speed motor	Chinese	5~18	117
			20~180	127
		Panasonic	5~18	111
			20~180	118

**Convey Capacity**

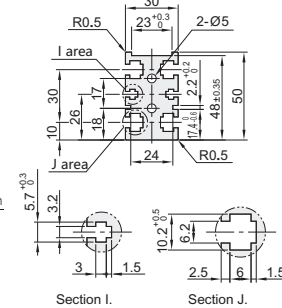


**FTS22-B20**



※ L ≤ 260, None of countersink for nut installation. But 3 nuts installed in each groove. ☐ Timing belt are T5 type.

**Profile cross section**



☐ Compatible with GB/DIN/JIS Standard hex nut

**Gearhead Reduction Ratio**

Gearhead Reduction Ratio	Belt Speed(m/min)	
	50Hz	60Hz
12.5	12.0	14.4
15	10.0	12.0
18	8.3	10.0
25	6.0	7.2
30	5.0	6.0
36	4.2	5.0
50	3.0	3.6
60	2.5	3.0
75	2.0	2.4
90	1.7	2.0
100	1.5	1.8
120	1.3	1.5
150	1.0	1.2
180	0.8	1.0

★ This table reference values are based on Panasonic motor(1400 rpm,60Hz) Chinese brand motor(1300 rpm, 60Hz) ★ Reference values may vary with load condition.

## Timing Belt Conveyor (Narrow Type)

Single Track Type Center Drive, 2/3-Groove Frame (Pulley Dia. 19/20mm)

**Features:** 10 or 20mm narrow belt. Saving space. Suitable for small components in limited interal space.



**Specification:**

**FTS24-10-330-6-TA220-SCM-12.5-A-N-F200**

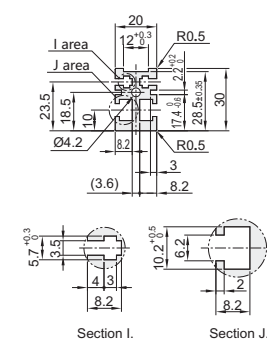
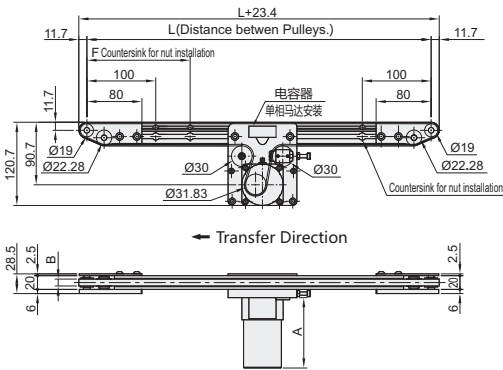
- ① ② ③ ④ ⑤ ⑥ ⑦ ⑧ ⑨ ⑩

Type		③Length L (5mm Increment)	Motor				⑧Belt Specification	⑨ Motor manufacturer Selection	⑩ Add Countersink (5 Increment)
①Part Number	②Width B		④Output(W)	⑤Voltage(V)	⑥Specification	⑦Gearhead Reduction Ratio			
FTS24	10	330~2000	6	TA100 Single Phase TA220 Single Phase	SCM Variable Speed Motor	5 7.5 9 12.5 15	White for general application	Chinese brand Panasonic Motor	Default (None of countersink) F (Add countersink) 190 < F < L-210
	20					18 25 30 36 50 60 75 90 100 120 150 180			

**KQB01-B10**

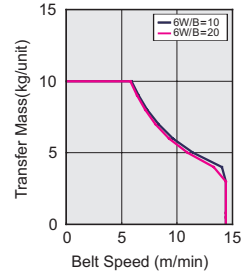
**Profile cross section**

**Motor size A**



Output (W)	Motor		Reduction ratio	A
	Specification	Manufacturer		
6W	Constant speed motor	Chinese	5-18	117
			20-180	127
		Panasonic	5-18	111
			20-180	118

**Convey Capacity**



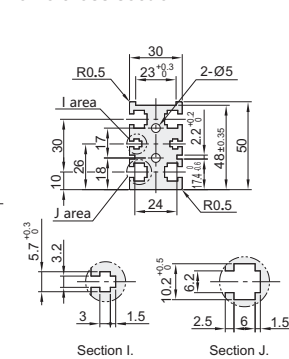
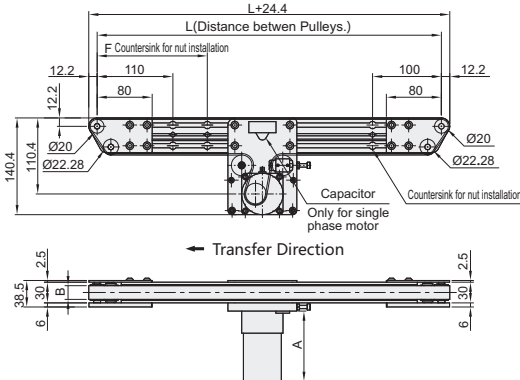
※ L ≤ 355, None of countersink for nut installation. But 3 nuts installed in each groove.

※ Reference value may vary with different belt

**KQB01-B20**

**Profile cross section**

**Gearhead Reduction Ratio**



Gearhead Reduction Ratio	Belt Speed(m/min)	
	50Hz	60Hz
12.5	12.0	14.4
15	10.0	12.0
18	8.3	10.0
25	6.0	7.2
30	5.0	6.0
36	4.2	5.0
50	3.0	3.6
60	2.5	3.0
75	2.0	2.4
90	1.7	2.0
100	1.5	1.8
120	1.3	1.5
150	1.0	1.2
180	0.8	1.0

※ L ≤ 355, None of countersink for nut installation. But 3 nuts installed in each groove.  
 □ Timing belt are T5 type.

★ This table reference values are based on Panasonic motor(1400 rpm,60Hz) Chinese brand motor(1300 rpm, 60Hz)  
 ★ Reference values may vary with load condition.



# Timing Belt Conveyor (Dual Tracks)

Head Drive, 2 Groove Frame (Pulley Dia. 30mm)

**Features:** Since there are two rows of conveyor surfaces, sensors and stoppers can be mounted between the belts. Belts replacement can be done easily.



**Specification:**

**FTD32-80-3000-25-TA220-SCM-5-E-N**

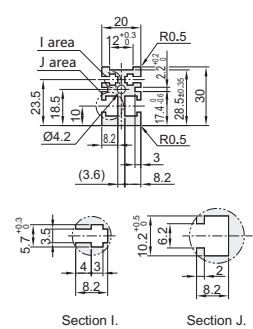
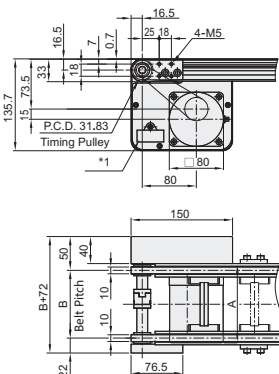
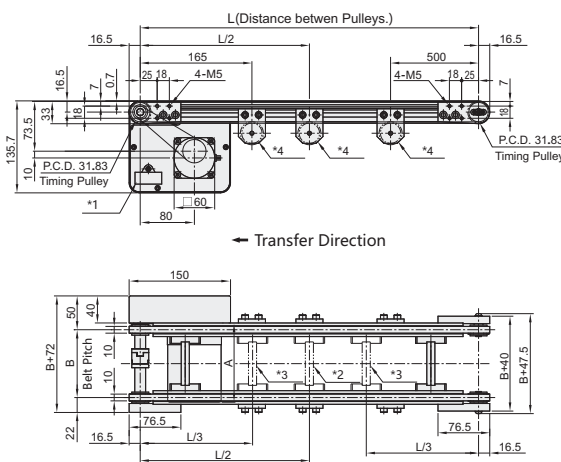
① ② ③ ④ ⑤ ⑥ ⑦ ⑧ ⑨

Type		③ Length L (5mm Increment)	Motor				⑧ Belt Specification	⑨ Motor manufacturer Selection
① Part Number	② Width B 10mm increments		④ Output(W)	⑤ Voltage(V)	⑥ Specification	⑦ Gearhead Reduction Ratio		
FTD32	80~300	255~3000	6 25	TA100 Single Phase TA220 Single Phase	SCM Variable Speed Motor	5 7.5 9 12.5 15 18 25 30 36 50 60 75 90 100 120 150 180	E White, General  D Green for sliding	Chinese brand  Panasonic Motor
			25	SA200 Three Phase	INV Induction Motor + Inverter	* 5-9 not applicable for 6W motor		

**Motor Power: 6W**

**Motor Power: 25W**

**Profile cross section**



Compatible with GB/DIN/JIS Standard hex nut

- \*1. Capacitor: Installed on Single-Phase constant speed motor.
- \*2. When 1005<L<2000, joints mounted at these locations (1 Place).
- \*3. When 2005<L<3000, joints mounted at these locations (2 Place).
- \*4. Belt support roller: When 2005<L, mounted at these locations(3 Place).
- ① Timing pulley used is T5 type.

※ L≥355, each slot has 3 inserted nuts provided.

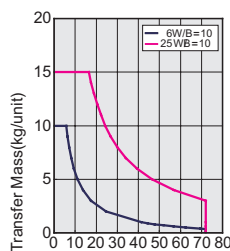
**Gearhead Reduction Ratio**

Gearhead Reduction Ratio	Belt Speed(m/min)	
	50Hz	60Hz
5	60.0	72.0
7.5	40.0	48.0
9	33.3	40.0
12.5	24.0	28.8
15	20.0	24.0
18	16.7	20.0
25	12.0	14.4
30	10.0	12.0
36	8.3	10.0
50	6.0	7.2
60	5.0	6.0
75	4.0	4.8
90	3.3	4.0
100	3.0	3.6
120	2.5	3.0
150	2.0	2.4
180	1.7	2.0

**Motor size A**

Output (W)	Motor		Reduction ratio	Motor length A
	Specification	Manufacturer		
6W	Constant speed motor	Chinese	5~18	117
			20~180	127
		Panasonic	5~18	111
			20~180	118
25W	Three phase motor	Chinese	5~18	117
			20~180	128.5
	Constant speed motor	Chinese	5~18	128
			20~180	138.5
	Three phase motor	Panasonic	5~180	115
			Constant speed motor	5~180

**Convey Capacity**



Belt Speed (m/min)  
※ Reference value may vary with different belt

★ This table reference values are based on Panasonic motor(1400 rpm,60Hz)  
Chinese brand motor(1300 rpm, 60Hz)  
★ Reference values may vary with load condition.

# Timing Belt Conveyor (Dual Tracks)

## Head Drive, 3 Groove Frame (Pulley Dia. 50mm)

**Features:** Since there are two rows of conveyor surfaces, sensors and stoppers can mounted between the belts. Belts replacement can be done easily.



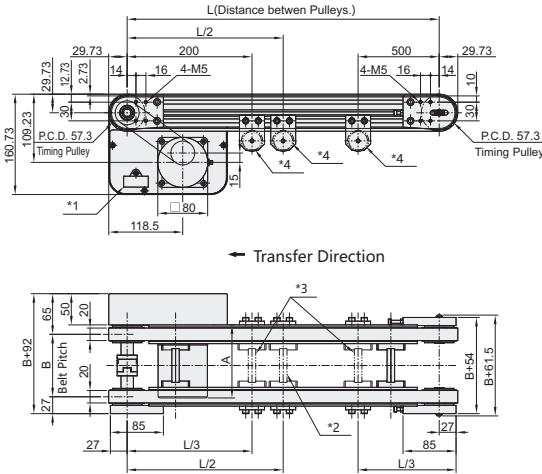
**Specification:**

**FTD52-80-3000-25-TA220-SCM-5-E-N**

- ① ② ③ ④ ⑤ ⑥ ⑦ ⑧ ⑨

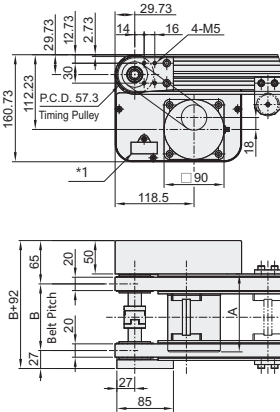
Type		③Length L (5mm Increment)	Motor				⑧Belt: Specification	⑨ Motor manufacturer Selection
①Part Number	②Width B 10mm increments		④Output(W)	⑤Voltage(V)	⑥Specification	⑦Gearhead Reduction Ratio		
FTD52	80~300	265~3000	25	TA100 Single Phase TA220 Single Phase	SCM Variable Speed Motor	5 7.5 9 12.5 15 18 25 30 36 50 60 75 90 100 120 150 180	E White, General  D Green for sliding	Chinese brand  Panasonic Motor
			40					

**Motor Power: 25W**

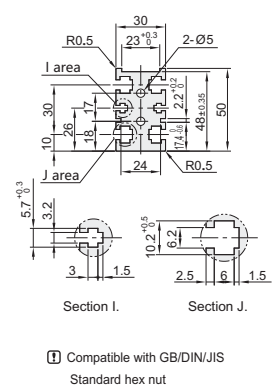


※ L ≥ 365, each slot has 3 inserted nuts provided.

**Motor Power: 40W**



**Profile cross section**



- \*1. Capacitor: Installed on Single-Phase constant speed motor.
- \*2. When 1005<L<2000, joints mounted at these locations (1 Place).
- \*3. When 2005<L<3000, joints mounted at these locations (2 Place).
- \*4. Belt support roller: When 2005<L, mounted at these locations(3 Place) Timing pulley used is T10 type.

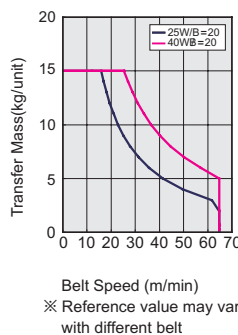
**Gearhead Reduction Ratio**

Gearhead Reduction Ratio	Belt Speed(m/min)	
	50Hz	60Hz
5	54.0	64.8
7.5	36.0	43.2
9	30.0	36.0
12.5	21.6	25.9
15	18.0	21.6
18	15.0	18.0
25	10.8	13.0
30	9.0	10.8
36	7.5	9.0
50	5.4	6.5
60	4.5	5.4
75	3.6	4.3
90	3.0	3.6
100	2.7	3.2
120	2.3	2.7
150	1.8	2.2
180	1.5	1.8

**Motor size A**

Output (W)	Motor		Reduction ratio	Motor length A
	Specification	Manufacturer		
25W	Three phase motor	Chinese	5~18	117
			20~180	128.5
	Constant speed motor	Chinese	5~18	128
			20~180	138.5
40W	Three phase motor	Panasonic	5~180	115
			Constant speed motor	125
	Three phase motor	Chinese	5~18	147
			20~180	165
Constant speed motor	Chinese	5~18	157	
		20~180	175	
Three phase motor	Panasonic	5~180	142	
		Constant speed motor	152	

**Convey Capacity**



- ★ This table reference values are based on Panasonic motor(1400 rpm,60Hz) Chinese brand motor(1300 rpm, 60Hz)
- ★ Reference values may vary with load condition.

# Timing Belt Conveyor (Dual Tracks)

Center Drive, 2 Groove Frame (Pulley Dia. 30mm)

**Features:** Since there are two rows of conveyor surfaces, sensors and stoppers can be mounted between the belts. Belts replacement can be done easily. The center drive configuration allows drive section position adjustments.

**Specification:**

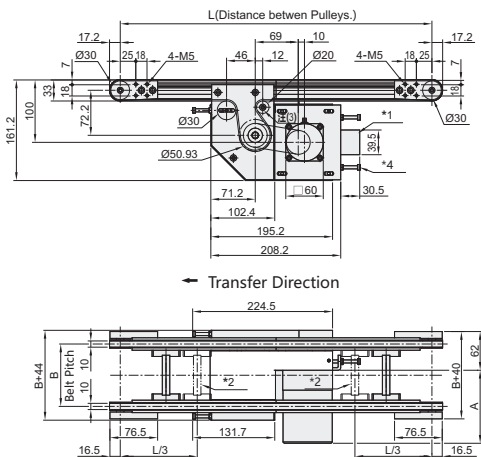
**FTD34-80-3000-25-TA220-SCM-5-E-N**

① ② ③ ④ ⑤ ⑥ ⑦ ⑧ ⑨



Type		③Length L (5mm Increment)	Motor				⑧Belt Specification	⑨ Motor manufacturer Selection
①Part Number	②Width B 10mm increments		④Output(W)	⑤Voltage(V)	⑥Specification	⑦Gearhead Reduction Ratio		
FTD34	80~300	265~3000	6	TA100 Single Phase	SCM Variable Speed Motor	5 7.5 9 12.5	E White, General	Chinese brand Panasonic Motor
			25	TA220 Single Phase		15 18 25 30 36 50 60 75 90 100 120 150 180 * 5~9 not applicable for 6W motor		
			25	SA200 Three Phase	INV Induction Motor + Inverter		D Green for sliding	

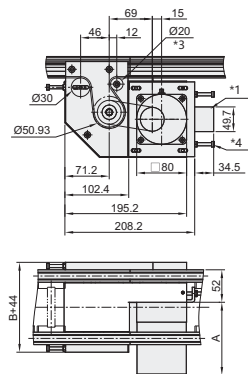
## Motor Power: 6W



※ 4 hex nuts installed in each slot when L≥365

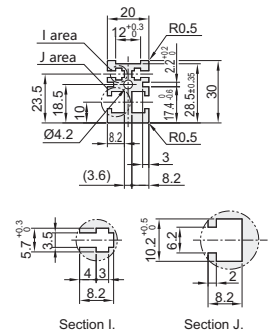
□ The drive section can be moved to a desired position within the aluminum extrusion slots.

## Motor Power: 40W



- \*1. Capacitor: Only in stalled on Single-Phase constant speed motor.
- \*2. When 2005<L<3000, joints mounted at these locations (2 Place).
- \*3. M5 Screw for tension.
- \*4. M5 Screw for tension.
- ※ Timing Belts used are T10 type.

## Profile cross section

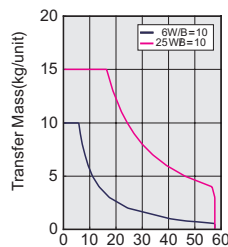


□ Compatible with GB/DIN/JIS Standard hex nut

## Motor size A

Output (W)	Motor		Reduction ratio	Motor length A
	Specification	Manufacturer		
6W	Constant speed motor	Chinese	5~18	117
			20~180	127
		Panasonic	5~18	111
			20~180	118
25W	Three phase motor	Chinese	5~18	117
			20~180	128.5
	Constant speed motor	Chinese	5~18	128
			20~180	138.5
Three phase motor	Panasonic	5~18	115	
		Constant speed motor	5~180	125

## Convey Capacity



Belt Speed (m/min)  
※ Reference value may vary with different belt

## Gearhead Reduction Ratio

Gearhead Reduction Ratio	Belt Speed(m/min)	
	50Hz	60Hz
5	48.0	57.6
7.5	32.0	38.4
9	26.7	32.0
12.5	19.2	23.0
15	16.0	19.2
18	13.3	16.0
25	9.6	11.5
30	8.0	9.6
36	6.7	8.0
50	4.8	5.8
60	4.0	4.8
75	3.2	3.8
90	2.7	3.2
100	2.4	2.9
120	2.0	2.4
150	1.6	1.9
180	1.3	1.6

★ This table reference values are based on Panasonic motor(1400 rpm,60Hz)  
Chinese brand motor(1300 rpm, 60Hz)  
★ Reference values may vary with load condition.

## Timing Belt Conveyor (Dual Tracks)

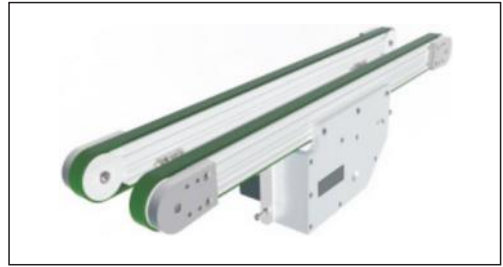
Center Drive, 3 Groove Frame (Pulley Dia. 50mm)

**Features:** Since there are two rows of conveyor surfaces, sensors and stoppers can mounted between the belts. Belts replacement can be done easily. The center drive configuration allows drive section position adjustments.

**Specification:**

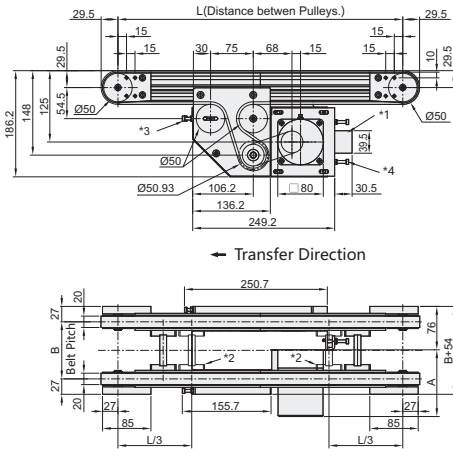
**FTD54-80-3000-25-TA220-SCM-5-E-N**

① ② ③ ④ ⑤ ⑥ ⑦ ⑧ ⑨



Type		③Length L (5mm Increment)	Motor				⑧Belt. Specification	⑨ Motor manufacturer Selection
①Part Number	②Width B 10mm increments		④Output(W)	⑤Voltage(V)	⑥Specification	⑦Gearhead Reduction Ratio		
FTD54	80~300	325~3000	25 40	TA100 Single Phase	SCM Variable Speed Motor	5 7.5 9 12.5 15 18 25 30 36 50 60 75 90 100 120 150 180	E White, General	Chinese brand Panasonic Motor
				SA200 Three Phase				

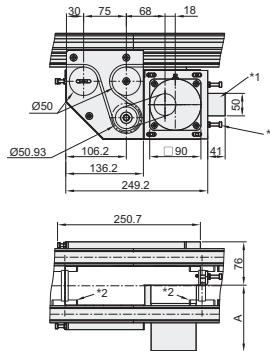
### Motor Power: 25W



※ 4 hex nuts installed in each slot when L≥425

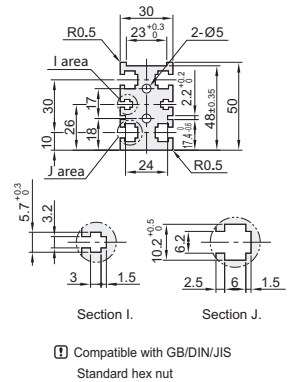
□ The drive section can be moved to a desired position within the aluminum extrusion slots.

### Motor Power: 40W



- \*1. Capacitor: Only in stalled on Single-Phase constant speed motor.
- \*2. When 2005<L<3000, joints mounted at these locations (2 Place).
- \*3. M5 Screw for tension.
- \*4. M5 Screw for tension.
- ※ Timing Belts used are T10 type.

### Profile cross section

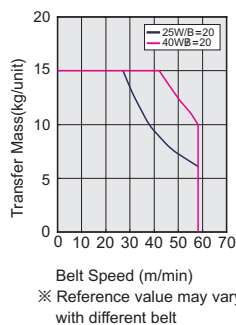


□ Compatible with GB/DIN/JIS Standard hex nut

### Motor size A

Output (W)	Motor		Reduction ratio	Motor length A
	Specification	Manufacturer		
25W	Three phase motor	Chinese	5~18	117
			20~180	128.5
	Constant speed motor	Chinese	5~18	128
			20~180	138.5
40W	Three phase motor	Panasonic	5~180	115
			Constant speed motor	125
	Three phase motor	Chinese	5~18	147
			20~180	165
Constant speed motor	Chinese	5~18	157	
		20~180	175	
Three phase motor	Panasonic	5~180	142	
		Constant speed motor	152	

### Convey Capacity



### Gearhead Reduction Ratio

Gearhead Reduction Ratio	Belt Speed(m/min)	
	50Hz	60Hz
5	48.0	57.6
7.5	32.0	38.4
9	26.7	32.0
12.5	19.2	23.0
15	16.0	19.2
18	13.3	16.0
25	9.6	11.5
30	8.0	9.6
36	6.7	8.0
50	4.8	5.8
60	4.0	4.8
75	3.2	3.8
90	2.7	3.2
100	2.4	2.9
120	2.0	2.4
150	1.6	1.9
180	1.3	1.6

★ This table reference values are based on Panasonic motor(1400 rpm,60Hz)  
Chinese brand motor(1300 rpm, 60Hz)  
★ Reference values may vary with load condition.

# Timing Belt Conveyor (Motor Integrated Type)

## End Drive, 3-Groove Frame (Pulley Dia. 50mm)

**Features:** Overall height has been reduced by half with the motor integrated inside.

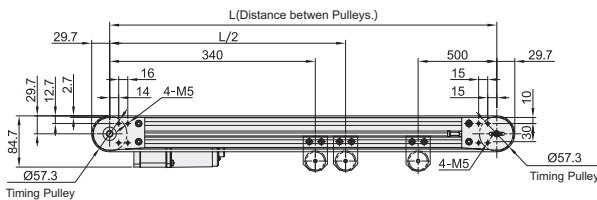


**Specification:**

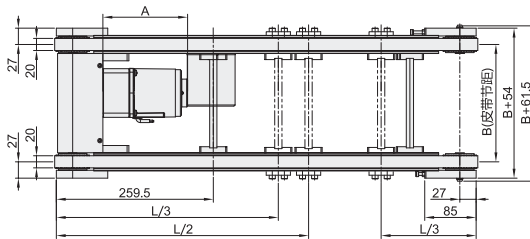
**FTW51-150-3000-25-TA220-SCM-5-E-N**

① ② ③ ④ ⑤ ⑥ ⑦ ⑧ ⑨

Type		③Length L (5mm Increment)	Motor				⑧Belt Specification	⑨ Motor manufacturer Selection
①Part Number	②Width B 10mm increments		④Output(W)	⑤Voltage(V)	⑥Specification	⑦Gearhead Reduction Ratio		
FTW51	150~300	300~3000	25	TA100 Single Phase	SCM Variable Speed Motor	5 7.5 9 12.5 15 18 25 30 36 50 60 75 90 100 120 150 180	E White, General  D Green for sliding	Chinese brand  Panasonic Motor
				TA220 Single Phase				

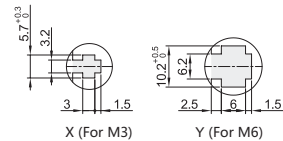
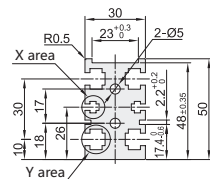


← Transfer Direction



※ L ≥ 365, each slot has 3 inserted nuts provided.

### Profile cross section



□ Compatible with GB/DIN/UIS Standard hex nut

### Gearhead Reduction Ratio

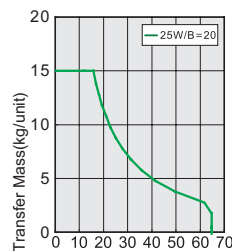
Gearhead Reduction Ratio	Belt Speed(m/min)	
	50Hz	60Hz
5	54.0	64.8
7.5	36.0	43.2
9	30.0	36.0
12.5	21.6	25.9
15	18.0	21.6
18	15.0	18.0
25	10.8	13.0
30	9.0	10.8
36	7.5	9.0
50	5.4	6.5
60	4.5	5.4
75	3.6	4.3
90	3.0	3.6
100	2.7	3.2
120	2.3	2.7
150	1.8	2.2
180	1.5	1.8

★ This table reference values are based on  
Panasonic motor(1400 rpm,60Hz)  
Chinese brand motor(1300 rpm, 60Hz)  
★ Reference values may vary with load condition.

### Motor size A

Output (W)	Motor		Reduction ratio	Motor length A
	Specification	Manufacturer		
25W	Three phase motor	Chinese	5~18	117
			20~180	128.5
	Constant speed motor	Chinese	5~18	128
			20~180	138.5
Three phase motor	Panasonic	5~180		115
		Constant speed motor		125

### Convey Capacity



Belt Speed (m/min)  
※ Reference value may vary with different belt

# Timing Belt Conveyor (Heavy Duty Type)

## End Drive, 2-Groove Frame (Pulley Dia. 70mm)

**Features:** Suitable for heavy workbin.

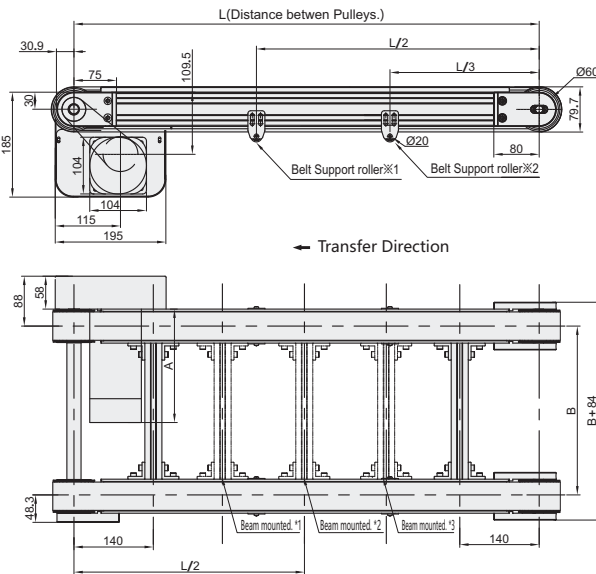


**Specification:**

**FTH71-150-5000-90-TA220-SCM-5-E-N**

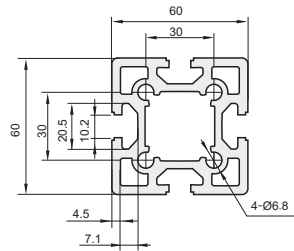
① ② ③ ④ ⑤ ⑥ ⑦⑧⑨

Type		③Length L (5mm Increment)	Motor				⑧Belt Specification	⑨ Motor manufacturer Selection
①Part Number	②Width B 10mm increments		④Output(W)	⑤Voltage(V)	⑥Specification	⑦Gearhead Reduction Ratio		
FTH71	150~600	600~5000	90 120 200	TA100 Single Phase	SCM Variable Speed Motor	5 7.5 9 12.5 15 18 25 30 36 50 60 75 90 100 120 150 180	E White, General	Chinese brand Panasonic Motor
				SA200 Three Phase				



L > 2000, Belt Support roller mounted. \*1  
 L > 3500, Belt Support roller mounted. \*2  
 L ≥ 1500, Beam mounted. \*1  
 L ≥ 2500, Beam mounted. \*2(Equispaced)  
 L ≥ 3500, Beam mounted. \*3(Equispaced)

**Profile cross section**



☐ Suitable T Nuts.  
 AHC21-4010-M4  
 AHC21-4010-M5  
 AHC21-4010-M6  
 AHC21-4010-M8

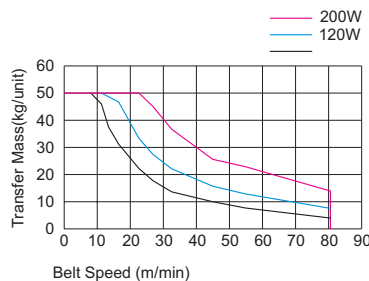
**Gearhead Reduction Ratio**

Gearhead Reduction Ratio	Belt Speed(m/min)	
	50HZ	60HZ
5	81.2	96.2
7.5	54.1	64.1
9	45.1	53.4
12.5	32.5	38.5
15	27.01	32.0
18	22.5	26.7
25	16.2	19.2
30	13.5	16.0
36	11.2	13.3
50	8.1	9.6
60	6.7	7.9
75	5.4	6.4
90	4.5	5.3
120	3.8	4.5
150	2.7	3.2
180	2.2	2.6

**Motor size A**

Output (W)	Motor		Reduction ratio	Motor length A
	Specification	Manufacturer		
90	Three phase motor	Chinese	5~20	183
			25~180	205
			Constant speed motor	5~20
	Constant speed motor	Panasonic	25~180	205
			5~180	195
			5~180	234.5
120	Three phase motor	Chinese	5~20	183
			25~180	205
			Constant speed motor	5~20
	Constant speed motor	Panasonic	25~180	205
			5~20	215
			25~180	230
200	Three phase motor	Chinese	5~20	215
			25~180	230
			Constant speed motor	5~20
	Constant speed motor	Panasonic	25~180	230
			5~20	215
			25~180	230

**Convey Capacity**



※ Reference value may vary with different belt

★ This table reference values are based on  
 Panasonic motor(1400 rpm,60Hz)  
 Chinese brand motor(1300 rpm, 60Hz)  
 ★ Reference values may vary with load condition.



**WUXI SAIBO INDUSTRY CO LTD**

6-701 XIHU EAST ROAD, WUXI 214011, CHINA

Tel: +86-510-8203 9930

[www.saibo-motion.com](http://www.saibo-motion.com)  
[info@saibo-motion.com](mailto:info@saibo-motion.com)



S07E-2023

